



<b>EAN:</b>	4013288181329	<b>Size:</b>	205x50x25 mm
<b>Part number:</b>	05100050001	<b>Weight:</b>	36 g
<b>Article number:</b>	350 PH SB	<b>Country of origin:</b>	CZ
		<b>Customs tariff number:</b>	82054000

- Screwdriver for cross-recess screws, Phillips
- Smooth hard zones for high speed turning, soft grip zones for high torque transfer
- Take it easy tool finder: colour coding according to profile and size
- Hexagonal anti-roll feature against rolling away
- Lasertip tips for more secure fit in the screw head

High quality Kraftform Plus screwdriver. Multi-component Kraftform Plus handle for pleasant, ergonomic working that makes blisters and calluses a thing of the past. Hard gripping zones for high working speeds whereas soft zones ensure high torque transfer. Take it easy tool finder with colour coding according to profiles and size stamp - for simple and rapid accessing of the required tool. The hexagonal non-roll feature prevents any rolling away at the workplace.

**Web link**

[https://products.wera.de/en/screwdrivers\\_kraftform\\_plus\\_series\\_300\\_350\\_ph\\_sb.html](https://products.wera.de/en/screwdrivers_kraftform_plus_series_300_350_ph_sb.html)

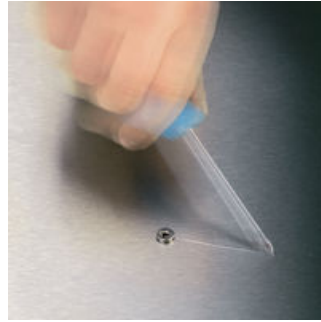
Wera - 350 PH SB  
05100050001 - 4013288181329

Wera Werkzeuge GmbH  
Korzter Straße 21-25  
D-42349 Wuppertal  
Tel: +49 (0)2 02 / 40 45-0  
E-Mail: [info@wera.de](mailto:info@wera.de)

Lasertip prevents slipping out



Kraftform Plus screwdrivers - ergonomics you can grasp. They relieve the entire hand-arm system even when used intensively. Along with other technical and product advantages such as the Lasertip for a secure fit in the screw head, Kraftform screwdrivers are the ideal choice whenever manual screwdriving jobs are concerned.



It happens time and time again that the tip slips out of the screw head when screwdriving, sometimes damaging valuable surfaces or even causing injury. The tips of the Wera Lasertip screwdrivers are microscopically roughened by means of a laser. This rough surface literally "bites" itself firmly into the screw head. Slipping out becomes a thing of the past.

Lasertip



A precisely-focused laser creates a sharp-edged surface structure. Wera Lasertip "bites" itself into the screw head and prevents any slips out of the recess. It is available for screwdrivers for slotted, Phillips and Pozidriv screws.

Reduced contact pressure



Wera Lasertip reduces the contact pressure required and enhances force transfer - meaning less screwdriving effort is required. Screwdriving becomes safer and easier.

Web link

[https://products.wera.de/en/screwdrivers\\_kraftform\\_plus\\_series\\_300\\_350\\_ph\\_sb.html](https://products.wera.de/en/screwdrivers_kraftform_plus_series_300_350_ph_sb.html)

Wera - 350 PH SB

05100050001 - 4013288181329

**Kraftform**



The basic idea for the prototype of the Kraftform handle - that the hand should dictate the design - has, right through to today, proved to be correct. In cooperation with the internationally recognised Fraunhofer IAO Institute, Wera developed a screwdriver handle designed to match the shape of the human hand as long ago as the 1960s. After a long development phase, the Wera Kraftform handle was launched to the market in 1968. It has been optimised through the years with new technologies, but has kept its proven shape. After all, the human hand has not changed either.

**Large contact area**



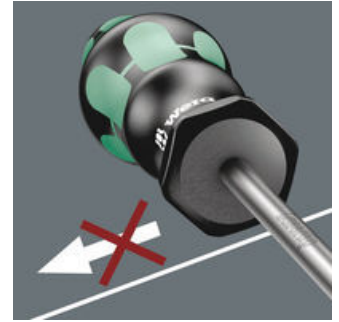
The large contact area - with particularly high friction to the soft zones - results in high torque transfer without any bruising from the edges.

**Rapid hand repositioning**



The hard materials used for the handle ensure rapid hand repositioning without any danger of the skin "sticking" to the handle. The surrounding hard zones with large diameters glide like wheels through the hand.

**Non-roll feature**



The hexagonal non-roll feature prevents any rolling away at the workplace.

**Web link**

[https://products.wera.de/en/screwdrivers\\_kraftform\\_plus\\_series\\_300\\_350\\_ph\\_sb.html](https://products.wera.de/en/screwdrivers_kraftform_plus_series_300_350_ph_sb.html)

Wera - 350 PH SB

05100050001 - 4013288181329

Wera Werkzeuge GmbH

Korzerter Straße 21-25

D-42349 Wuppertal

Tel: +49 (0)2 02 / 40 45-0

E-Mail: [info@wera.de](mailto:info@wera.de)

## 350 PH SB Screwdriver for Phillips screws, PH 0 x 60 mm

Kraftform Plus – Series 300



Set contents:

### 350 PH Screwdriver for Phillips screws, PH 0 x 60 mm



05008705001<sup>1)</sup>

1x PH 0 x 60 mm

1) without Lasertip



without Lasertip

#### Web link

[https://products.wera.de/en/screwdrivers\\_kraftform\\_plus\\_series\\_300\\_350\\_ph\\_sb.html](https://products.wera.de/en/screwdrivers_kraftform_plus_series_300_350_ph_sb.html)

Wera - 350 PH SB

05100050001 - 4013288181329

Wera Werkzeuge GmbH

Korzerter Straße 21-25

D-42349 Wuppertal

Tel: +49 (0)2 02 / 40 45-0

E-Mail: [info@wera.de](mailto:info@wera.de)