

9714 Foam insert The Chiseldriver screwdriver set 1, 13 pieces

Kraftform Plus – Series 900



EAN: 4013288232540

Part number: 05150105001

Article number: 9714

Size: 400x360x65 mm

Weight: 2678 g

Country of origin: CZ

Customs tariff number: 82054000

- Durable foam insert, each tool has its own place; two-coloured, missing tools will quickly be noticed
- High-quality, durable foam insert without chemical vapours
- 13 chiseldrivers for screwdriving, chiseling, mortising
- Hexagonal blade extending through the handle
- Impact cap and bolster for the transfer of higher torque
- The Wera Black Point tip offers an exact fit and optimum corrosion protection
- Multi-component Kraftform handle for fast and ergonomic screwdriving
- Width x height x depth: without tools 344 x 30 x 392 mm, with tools 344 x 46 x 392 mm

Durable foam insert; two-coloured for quick identification of missing parts; suitable for the Tool Rebel roller cabinet. Equipped with 13 Wera Kraftform chiseldrivers.



Web link

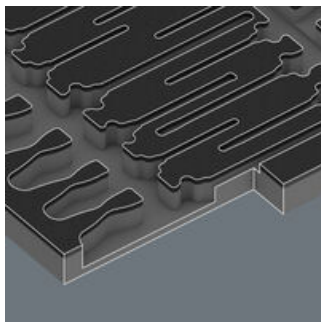
https://products.wera.de/en/screwdrivers_kraftform_plus_series_900_9714.html

Wera - 9714

05150105001 - 4013288232540

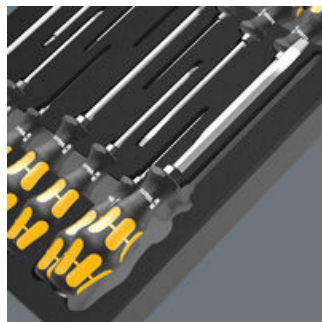
Wera Werkzeuge GmbH
Korzter Straße 21-25
D-42349 Wuppertal
Tel: +49 (0)2 02 / 40 45-0
E-Mail: info@wera.de

Safe storage and quick overview



The tools sit securely in the foam thanks to precise contour cutouts, but are easy to remove. The carefully designed arrangement of the tools ensures space-saving storage and quick access to each tool.

Two-coloured foam insert



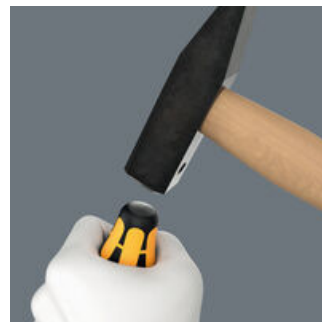
After removing the tool the light grey second foam becomes visible and therefore missing tools are quickly identified.

Series 900 – the Chiseldriver



Screwdrivers are often misused as chisels. This can be dangerous. The chiseldriver is the solution when not only screwdriving is required. For fastening, chiselling and loosening seized screws. Wera chiseldriver: the screwdriver whenever the going gets tough!

Integrated impact cap



An integrated impact cap lengthens the service life and reduces the danger of splintering. Nevertheless, always wear protective goggles.

Pound-thru blade



A hexagon blade made out of high-quality bit material extends right through the handle - thereby ensuring full transfer of force, even when struck with a hammer. The ductile tempered material prevents the blade from splintering or breaking.

Integrated hex bolster



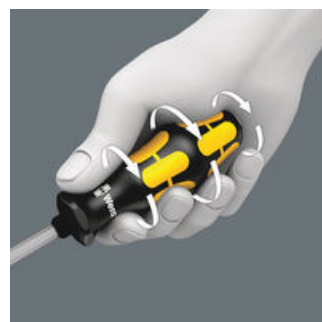
Greater torque can be transferred by fitting an open-jaw or ring spanner over the integrated hex bolster.

Wera Black Point tip



The Wera Black Point tip and a refined hardening process ensure long service life of the tip, improved corrosion protection and an exact fit.

Rapid hand repositioning



The hard materials used for the handle ensure rapid hand repositioning without any danger of the skin "sticking" to the handle. The surrounding hard zones with large diameters glide like wheels through the hand.

Web link

https://products.wera.de/en/screwdrivers_kraftform_plus_series_900_9714.html

Wera - 9714

05150105001 - 4013288232540

Wera Werkzeuge GmbH

Korzerter Straße 21-25

D-42349 Wuppertal

Tel: +49 (0)2 02 / 40 45-0

E-Mail: info@wera.de

9714 Foam insert The Chiseldriver screwdriver set 1, 13 pieces

Kraftform Plus – Series 900



Set contents:

917 SPH Screwdriver for Phillips screws, PH 1 x 80 mm



05017005001	1x	PH 1 x 80 mm
05017010001	1x	PH 2 x 100 mm
05017015001	1x	PH 3 x 150 mm

918 SPZ Screwdriver for Pozidriv screws, PZ 1 x 80 mm



05017050001	1x	PZ 1 x 80 mm
05017052001	1x	PZ 2 x 100 mm
05017054001	1x	PZ 3 x 150 mm

932 A Screwdriver for slotted screws, 0.6 x 3.5 x 80 mm



05018260001 ^{1),2),3)}	1x	0.6 x 3.5 x 80 mm
05018262001	1x	0.8 x 4.5 x 90 mm
05018264001	1x	1 x 5.5 x 100 mm
05018266001	1x	1.2 x 7 x 125 mm
05018268001	1x	1.6 x 9 x 150 mm

1) No pound-thru blade

2) No impact cap

3) No hexagon bolster

977 Screwdriver for TORX® screws, TX 20 x 90 mm

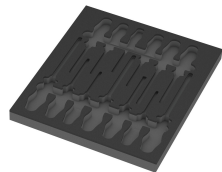


05024401001	1x	TX 20 x 90 mm
05024402001	1x	TX 25 x 100 mm

9814 Foam insert The Chiseldriver screwdriver set 1, empty, 344 x 30 x 392 mm

05137314001 ¹⁾	1x	344 x 30 x 392 mm
---------------------------	----	-------------------

1) Attention: The foam insert does not fit in the previous model 05501051001 of the roller cabinet.



Attention: The foam insert does not fit in the previous model 05501051001 of the roller cabinet.

Web link

https://products.wera.de/en/screwdrivers_kraftform_plus_series_900_9714.html

Wera - 9714

05150105001 - 4013288232540

Wera Werkzeuge GmbH

Korzerter Straße 21-25

D-42349 Wuppertal

Tel: +49 (0)2 02 / 40 45-0

E-Mail: info@wera.de