

9733 Foam insert 6001 Joker Switch set 1, 11 pieces

6001 Joker Switch Ratcheting combination wrenches, with switch lever



EAN:	4013288232496	Size:	405x185x55 mm
Part number:	05150123001	Weight:	2159 g
Article number:	9733	Country of origin:	CZ
		Customs tariff number:	82041100

- Durable foam insert, each tool has its own place; two-coloured, missing tools will quickly be noticed
- High-quality, durable foam insert without chemical vapours
- Reversible 6001 Joker Switch ratcheting combination wrench
- Ratchet end tilted by 15°
- Practical holding function thanks to the metal plate in the jaw
- Limit stop prevents any slipping
- Very fine toothing and robust locking element
- With Take it easy tool finder: colour coding by size

Durable foam insert; two-coloured for quick identification of missing parts; suitable for the Tool Rebel roller cabinet. Equipped with 11 reversible Joker Switch 6001 ring ratchet spanners.



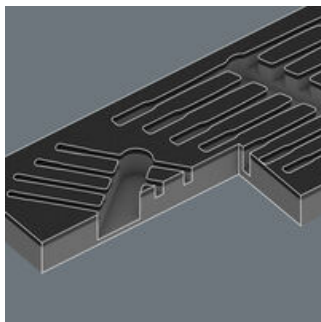
Web link

https://products.wera.de/en/joker_6001_joker_switch_ratcheting_combination_wrenches_with_switch_lever_9733.html

Wera - 9733
05150123001 - 4013288232496

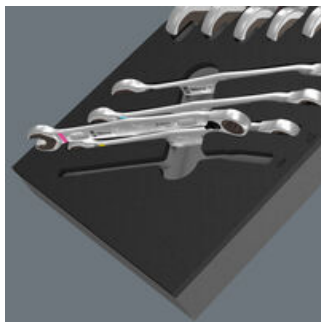
Wera Werkzeuge GmbH
Korzter Straße 21-25
D-42349 Wuppertal
Tel: +49 (0)2 02 / 40 45-0
E-Mail: info@wera.de

Safe storage and quick overview



The tools sit securely in the foam thanks to precise contour cutouts, but are easy to remove. The carefully designed arrangement of the tools ensures space-saving storage and quick access to each tool.

Two-coloured foam insert



After removing the tool the light grey second foam becomes visible and therefore missing tools are quickly identified.

Joker Switch



The direction of the fine-tooth ratchet mechanism can easily be changed via the smooth switch lever.

Fine tooth mechanism



The ratcheting feature at the ring end boasts an exceptional, fine tooth mechanism - 80 teeth in all - which provides greater flexibility, even in very confined workspaces.

Tilted ratchet end



The ratchet end is tilted at 15° to the tool axis, making application of the tool in confined spaces much easier.

Holding function



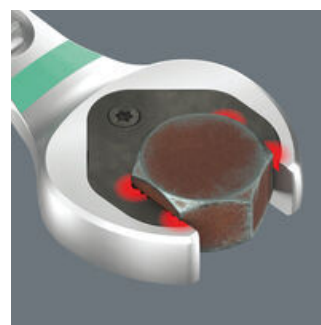
The Joker's holding function means that nuts and bolts can be held in the jaw and easily positioned where they are needed. Fastening on to the thread can then be done quickly and safely, thanks to the innovative special stop-plate which holds the fastener. No more time-wasting searches for dropped nuts and bolts! After applying and positioning the nut or bolt, fastening can begin immediately - no additional tools required.

Integrated limit-stop



Constant re-positioning of the wrench? Difficulty holding fasteners in confined spaces? Easing off to avoid any risks of injury or fastener damage? That was yesterday. Today, the Joker prevents slipping off of the fastener head with its integrated limit-stop - no longer is the thumb needed to act as a depth stop. This makes applications much easier and allows significantly more force to be applied during fastening jobs.

Double-hex geometry



The Joker's clever double-hex geometry delivers a very positive connection with nuts or bolts - it's a perfect fit. Serrated teeth on the hardened metal plate provide grip in the Joker's open end literally bite themselves into the bolt, with its extremely hard tips. Both features combine to prevent slipping, even at higher torque.

Web link

https://products.wera.de/en/joker_6001_joker_switch_ratcheting_combination_wrenches_with_switch_lever_9733.html

Wera - 9733

05150123001 - 4013288232496

Wera Werkzeuge GmbH

Korzerter Straße 21-25

D-42349 Wuppertal

Tel: +49 (0)2 02 / 40 45-0

E-Mail: info@wera.de

9733 Foam insert 6001 Joker Switch set 1, 11 pieces

6001 Joker Switch Ratcheting combination wrenches, with switch lever



Set contents:

6001 Joker Switch Ratcheting combination wrench, with switch lever, 8 x 144 mm

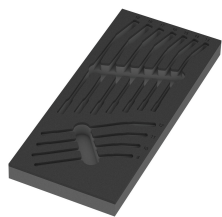


05020064001	1x	8 x 144 mm
05020065001	1x	10 x 159 mm
05020066001	1x	11 x 165 mm
05020067001	1x	12 x 171 mm
05020068001	1x	13 x 179 mm
05020069001	1x	14 x 187 mm
05020070001	1x	15 x 199 mm
05020071001	1x	16 x 213 mm
05020072001	1x	17 x 225 mm
05020073001	1x	18 x 234 mm
05020074001	1x	19 x 246 mm

9833 Foam insert 6001 Joker Switch set 1, empty, 172 x 30 x 392 mm

05137333001 ¹⁾	1x	172 x 30 x 392 mm
---------------------------	----	-------------------

1) Attention: The foam insert does not fit in the previous model 05501051001 of the roller cabinet.



Attention: The foam insert does not fit in the previous model 05501051001 of the roller cabinet.

Web link

https://products.wera.de/en/joker_6001_joker_switch_ratcheting_combination_wrenches_with_switch_lever_9733.html

Wera - 9733

05150123001 - 4013288232496

Wera Werkzeuge GmbH
Korzerter Straße 21-25
D-42349 Wuppertal
Tel: +49 (0)2 02 / 40 45-0
E-Mail: info@wera.de