

EXPLODED DIAGRAM: A-300

Warning

This diagram is for your reference only. Do not attempt to service or repair the Tool.

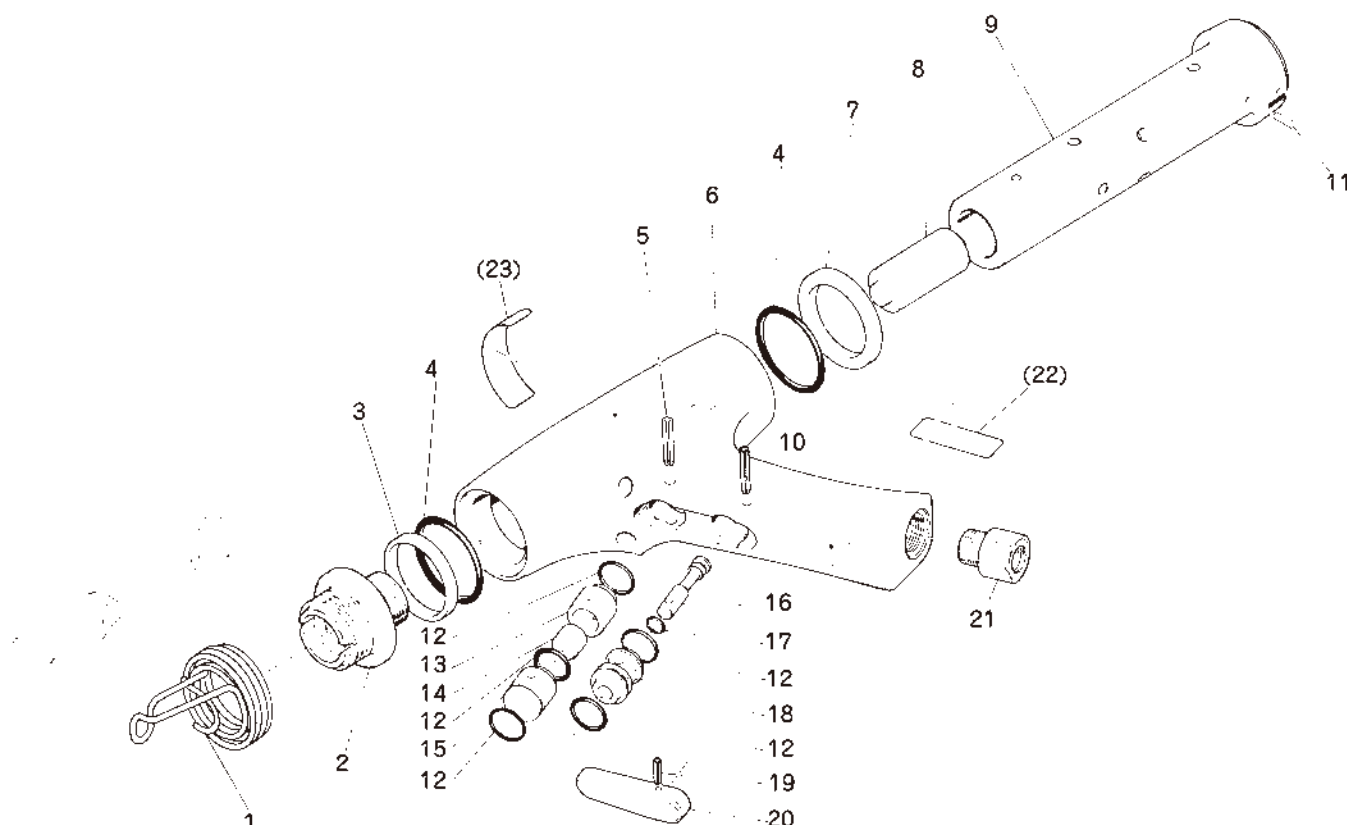
Do not take the Tool apart. Contact an authorized Nitto dealer for all service and repair of the Tool.

Improper service and repair can cause accidents and service injuries.

Never attempt to modify the Tool.

Never attempt service or repair the Tool yourself.

Exploded view/parts list are subject to change at any time without notice. (As of Jun. 2014)



The part numbers with () are included in the Ass'y parts written above them.

No.	Part No.	Description	Qty	Price
1	TP02308	Chisel Spring	1	
2	TP02791	Chisel Guide	1	
3	TP02300	Front Cushion	1	
4	TP11995	O-Ring P-31.5	2	
5	TP08389	Spring Pin 4×24	1	
6	TB08769	Housing Sub Ass'y	1set	
22	(TQ12611)	Label CE Mark	1	
23	(TQ12830)	Label Warning	1	
7	TP02312	Rear Cushion	1	
8	TP00597	Piston	1	
9	TA90793	Cylinder Ass'y	1set	
10	TP00460	Spring Pin 3×22	1	
11	TP08932	Spring Pin 4×8	1	
12	TP11996	O-Ring KS-10	5	
13	TP02302	Valve Case	1	

No.	Part No.	Description	Qty	Price
14	TP02309	Spool	1	
15	TP02303	Valve Stopper	1	
16	TP02306	Throttle Valve	1	
17	TP11994	O-Ring P-4	1	
18	TP02305	Valve Guide	1	
19	TP02310	Spring Pin 3×12	1	
20	TP02304	Trigger	1	
21	TP00857	Bushing M16×Rc1/4	1	

Accessories

No.	Part No.	Description	Qty	Price
	TP02236	Bushing R1/4×NPT1/4	1	
	CP02961	Hose Nipple R1/4×1/4	1	
	TQ12831	Instruction Manual	1	
	TQ12832	Declaration of Conformity	1	