

## EXPLODED DIAGRAM : JEX-2800A

### WARNING

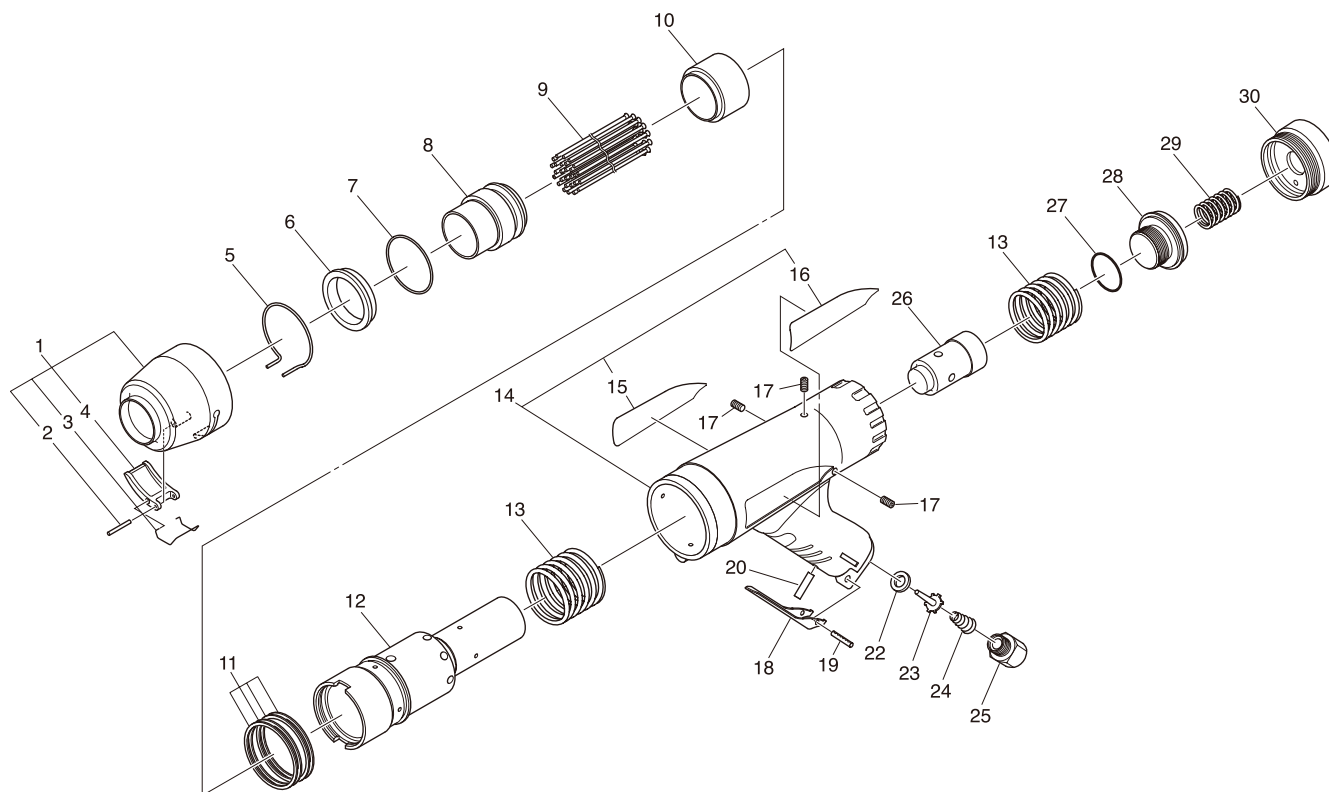
This diagram is for your reference only. Do not attempt to service or repair the Tool.

Do not take the Tool apart. Contact an authorized Nitto dealer for all service and repair of the Tool.

Improper service and repair can cause accidents and service injuries.

Never attempt to modify the Tool. Never attempt service or repair the Tool yourself.

Exploded diagram/parts list are subject to change at any time without notice. (As of Oct. 2014)



The part numbers with ( ) are included in the Ass'y parts written above them.

No.	Part No.	Description	Qty	Price
1	TB05957	Needle Guide Ass'y	1set	
2	(TP13893)	Spring Pin 3×22	1	
3	(TQ10583)	Clamp Spring	1	
4	(TQ10555)	Clamp Lever	1	
5	TQ10246	Snap Ring	1	
6	TQ10247	Lock Ring	1	
7	TQ10562	O-Ring G-40	1	
8	TP01461	Needle Supporter O.D. 3	1	
9	TP00341	Needle O.D. 3×180mm	28	
10	TP00399	Throttle Anvil	1	
11	TQ10241	Back UP Ring	4	
12	TQ10240	Cylinder	1	
13	TQ10239	Spring 3.5×44×38	2	
14	TB08624	Housing Ass'y A	1set	
15	(TQ12783)	Label Warning	1	
16	(TQ12659)	Label Name	1	
17	(TP08684)	Hex.Socket Screw 4×8	3	
18	TP01557	Throttle Lever	1	
19	TP01802	Spring Pin 3×28	1	
20	TQ10450	Parallel Pin 5×35	1	

No.	Part No.	Description	Qty	Price
22	TQ04671	Seal Sheet 9×13.9×2	1	
23	TQ04664	Valve	1	
24	TQ04665	Conical Spring 0.8×6.4×11.6×21.8	1	
25	TQ10236	Bushing R3/8×M16	1	
26	TP00395	Piston	1	
27	CP21603	O-Ring JASO-1028	1	
28	TQ11251	Rear Bolt	1	
29	TQ10238	Spring 2.6×14.3×24	1	
30	TQ11250	Rear Cap	1	

#### Accessories

No.	Part No.	Description	Qty	Price
	—	Needle O.D.4×180mm	14	
	TP01462	Needle Supporter O.D.4	1	
	TQ02350	Bushing R3/8×NPT3/8	1	
	TQ03262	Hose Nipple R3/8×3/8	1	
	TQ12717	Instruction Manual	1	
	TQ12718	Declaration of Conformity	1	