



●PUSH-PULL



●PULL

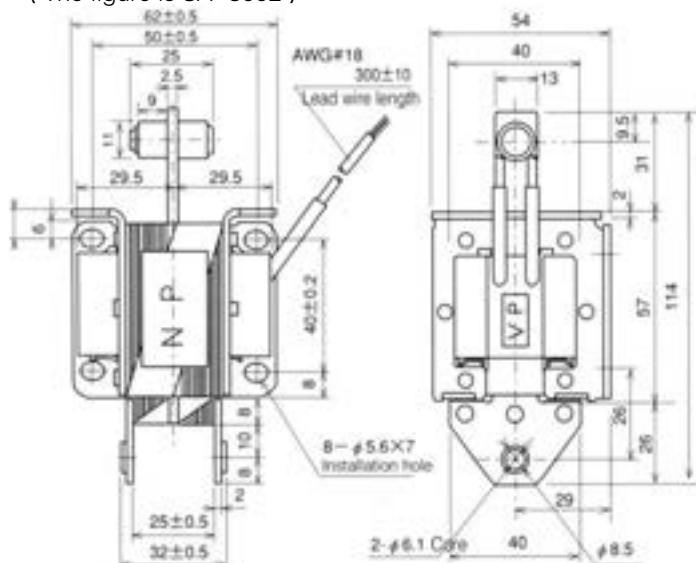
SA-3002

(PUSH-PULL)

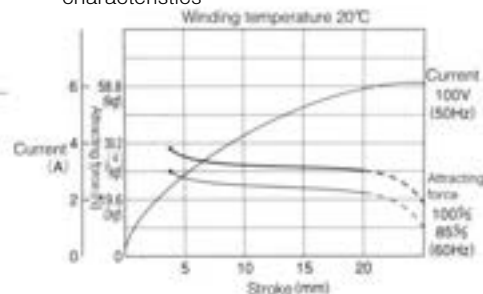
SA-3001

(PULL)

(The figure is SA-3002)



■Attracting force characteristics: current characteristics



■Current Value

Model	Voltage AC (V)	Starting current (A)	Holding current (A)	Rated attracting force / Rated stroke
SA-3002	100	5.8	0.52	29.4N(3.0kgf) /20mm
	200	2.9	0.25	
SA-3001	100	5.8	0.52	29.4N(3.0kgf) /20mm
	200	2.9	0.25	

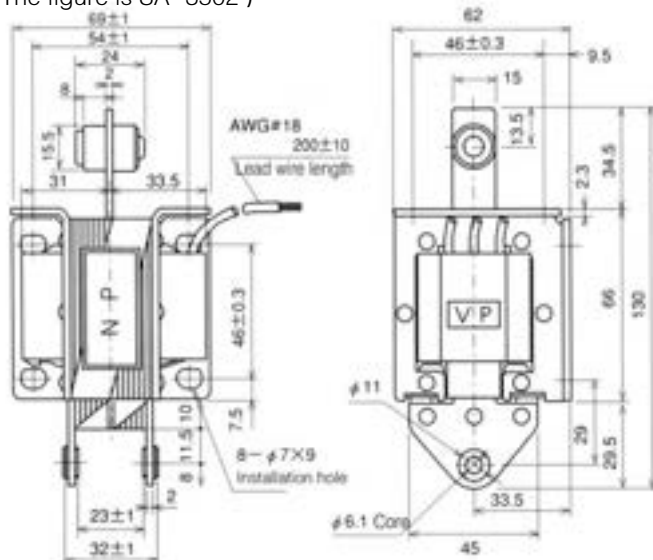
SA-3502

(PUSH-PULL)

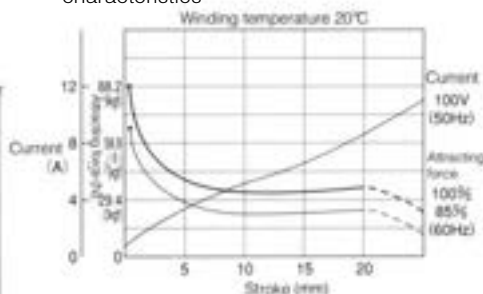
SA-3501

(PULL)

(The figure is SA-3502)



■Attracting force characteristics: current characteristics



■Current Value

Model	Voltage AC (V)	Starting current (A)	Holding current (A)	Rated attracting force / Rated stroke
SA-3502	100	8.0	0.6	29.4N(3.0kgf) /20mm
	200	4.0	0.33	
SA-3501	100	8.0	0.6	29.4N(3.0kgf) /20mm
	200	4.0	0.33	

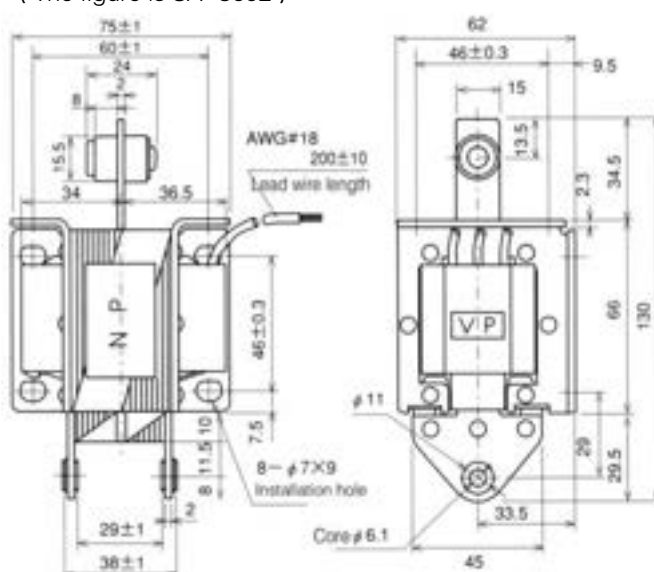
SA-3602

(PUSH-PULL)

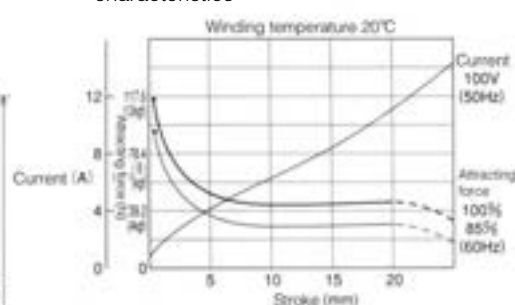
SA-3601

(PULL)

(The figure is SA-3602)



■Attracting force characteristics: current characteristics



■Current Value

Model	Voltage AC (V)	Starting current (A)	Holding current (A)	Rated attracting force / Rated stroke
SA-2602	100	9.6	0.8	39.2N(4.0kgf) /20mm
	200	4.5	0.4	
SA-2601	100	9.6	0.8	39.2N(4.0kgf) /20mm
	200	4.5	0.4	