

AC Solenoid

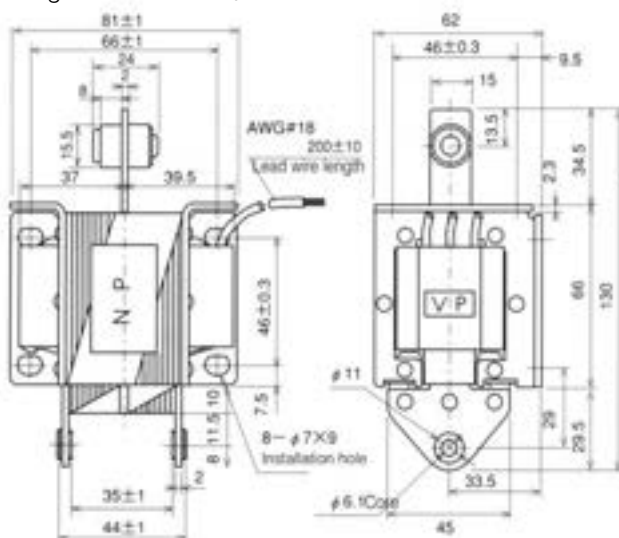
SA-3702

(PUSH-PULL)

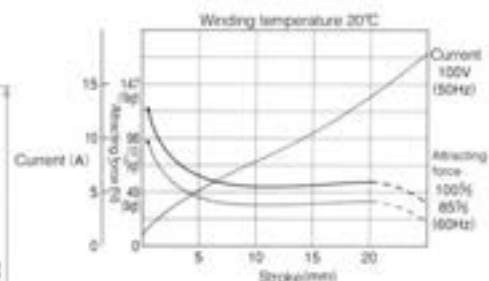
SA-3701

(PULL)

(The figure is SA-3702)



■ Attracting force characteristics: current characteristics



■ Current Value

Model	Voltage AC (V)	Starting current (A)	Holding current (A)	Rated attracting force
				Rated stroke
SA-3702	100	12.0	0.9	49.0N(5.0kgf) /20mm
	200	5.5	0.45	
SA-3701	100	12.0	0.9	
	200	5.5	0.45	

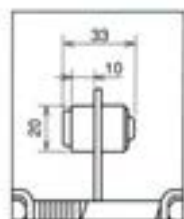
SA-4402

(PUSH-PULL)

SA-4401

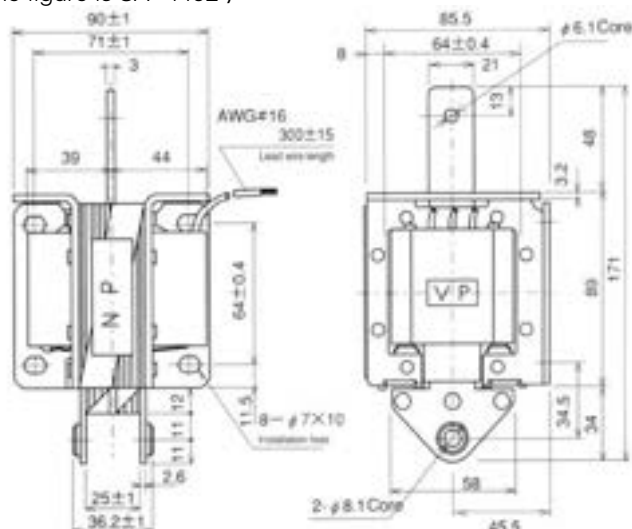
(PULL)

(The figure is SA-4402)

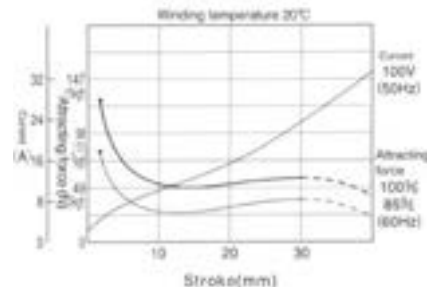


When blocking rubber is connected.

- With SA-4402 blocking rubber



■ Attracting force characteristics: current characteristics



■ Current Value

Model	Voltage AC (V)	Starting current (A)	Holding current (A)	Rated attracting force
				Rated stroke
SA-4402	100	20.0	1.4	49.0N(5.0kgf) /30mm
	200	10.0	0.65	
SA-4401	100	20.0	1.4	
	200	10.0	0.65	

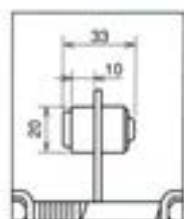
SA-4502

(PUSH-PULL)

SA-4501

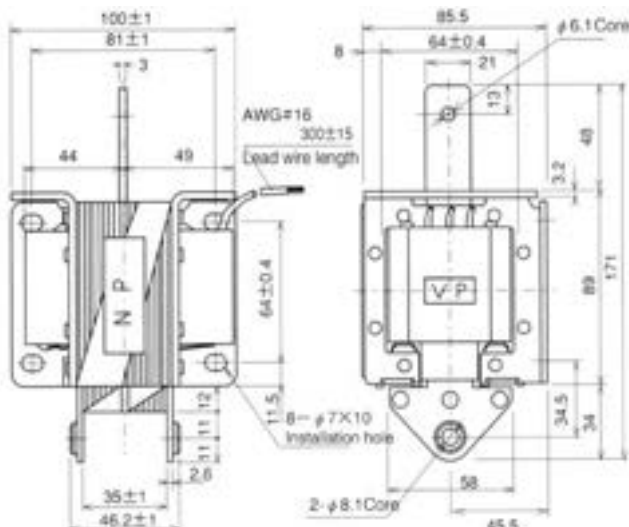
(PULL)

(The figure is SA-4502)

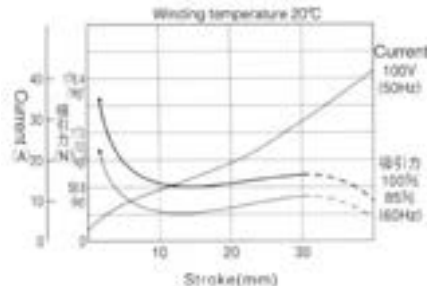


When blocking rubber is connected.

- With SA-4502 blocking rubber



■ Attracting force characteristics: current characteristics



■ Current Value

Model	Voltage AC (V)	Starting current (A)	Holding current (A)	Rated attracting force
				Rated stroke
SA-2602	100	27.0	1.75	58.8N(6.0kgf) /30mm
	200	12.6	0.76	
SA-2601	100	27.0	1.75	
	200	12.6	0.76	