



●PUSH-PULL



●PULL

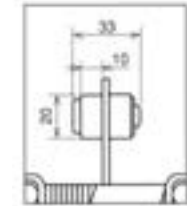
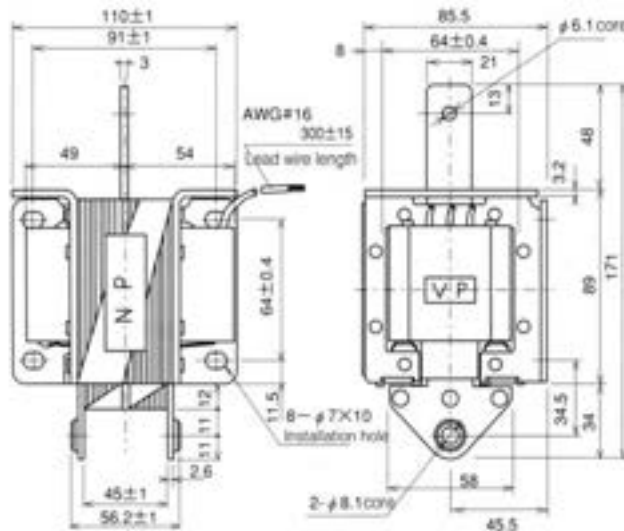
## SA-4602

(PUSH-PULL)

## SA-4601

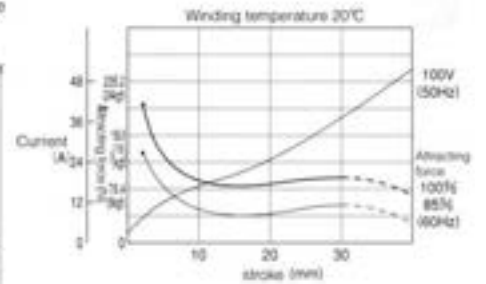
(PULL)

( The figure is SA-4602 )



● With SA-4602 blocking rubber

■ Attracting force characteristics: current characteristics

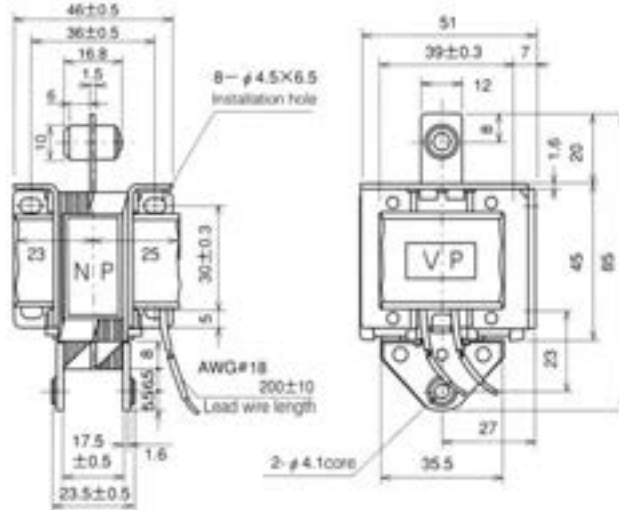


■ Current Value

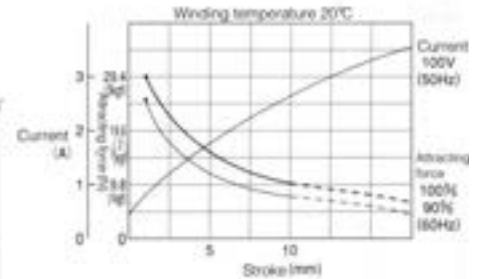
Model	Voltage AC (V)	Starting current (A)	Holding current (A)	Rated attracting force / Rated stroke
SA-4602	100	32.0	2.0	78.4N(8.0kgf) /30mm
	200	14.5	1.0	
SA-4601	100	32.0	2.0	78.4N(8.0kgf) /30mm
	200	14.5	1.0	

## SA-21

(PUSH-PULL)



■ Attracting force characteristics: current characteristics

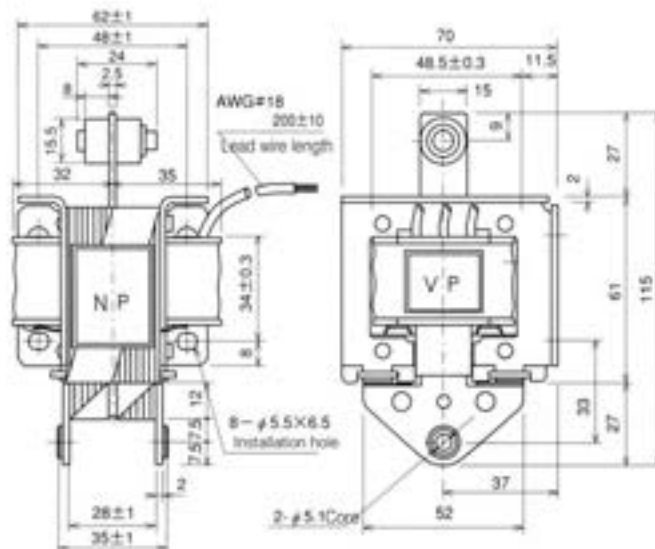


■ Current Value

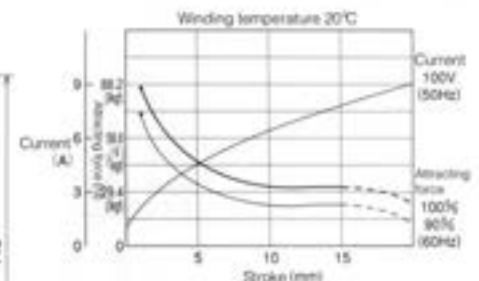
Model	Voltage AC (V)	Starting current (A)	Holding current (A)	Rated attracting force / Rated stroke
SA-21	100	2.6	0.42	9.8N(1.0kgf) /10mm
	200	1.3	0.2	

## SA-32

(PUSH-PULL)



■ Attracting force characteristics: current characteristics



■ Current Value

Model	Voltage AC (V)	Starting current (A)	Holding current (A)	Rated attracting force / Rated stroke
SA-32	100	7.2	0.8	29.4N(3.0kgf) /15mm
	200	3.6	0.42	