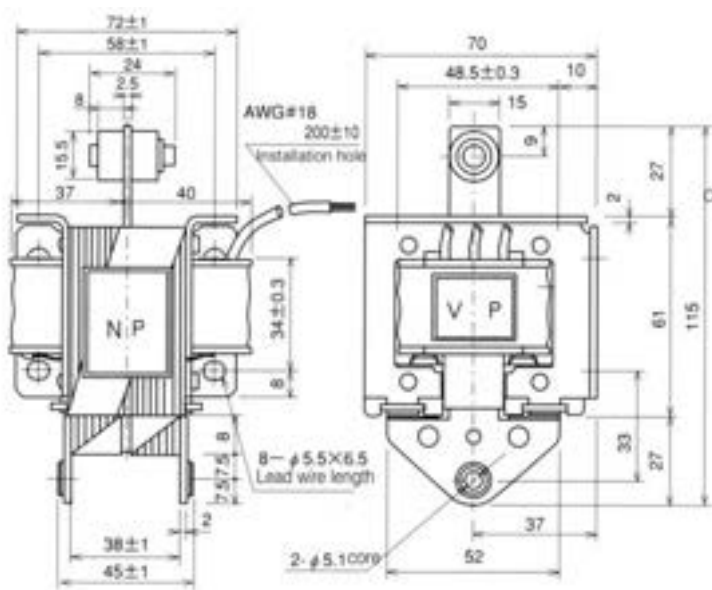
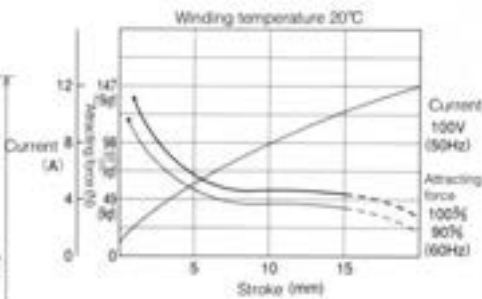


# AC Solenoid

## SA-33 (PUSH-PULL)



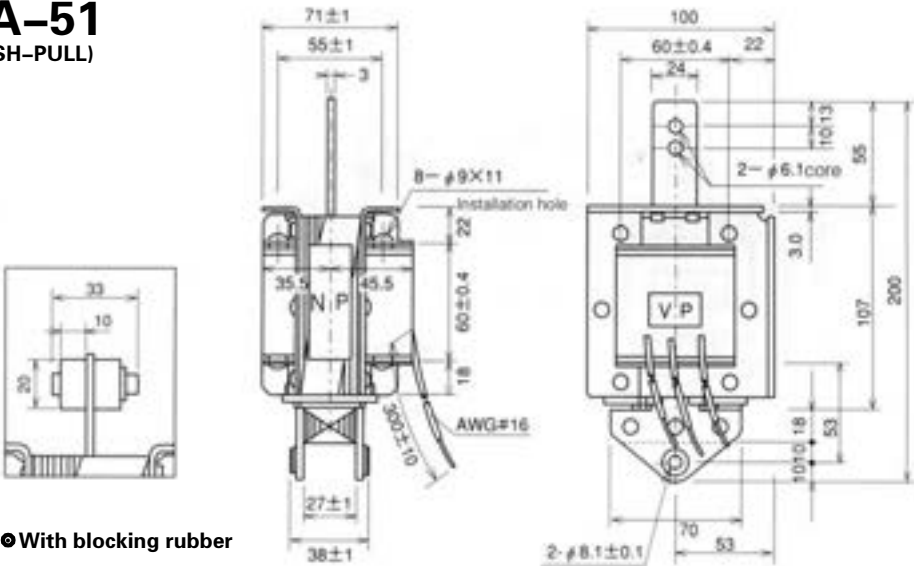
■Attracting force characteristics: current characteristics



■Current Value

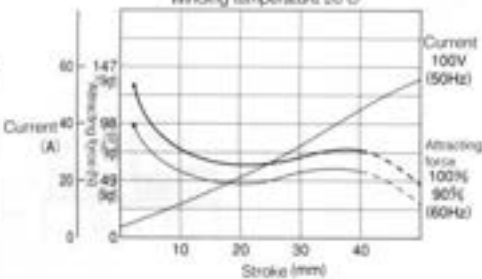
Model	Voltage AC (V)	Starting current (A)	Holding current (A)	Rated attracting force
				Rated stroke
SA-33	100	11.0	1.1	49.0N(5.0kgf) /15mm
	200	5.5	0.55	

## SA-51 (PUSH-PULL)



● With blocking rubber

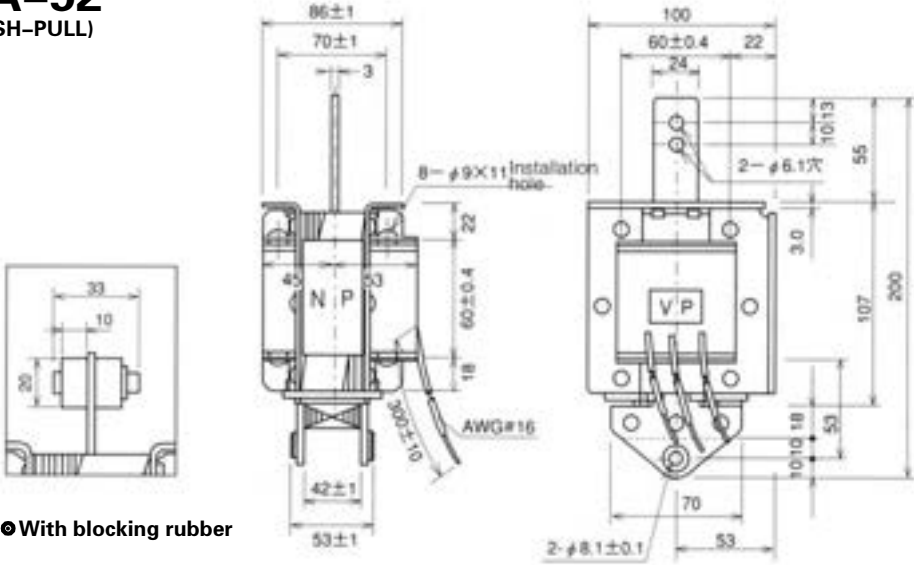
■Attracting force characteristics: current characteristics



■Current Value

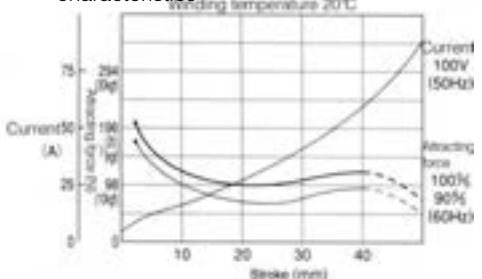
Model	Voltage AC (V)	Starting current (A)	Holding current (A)	Rated attracting force
				Rated stroke
SA-51	100	45.0	2.6	49.0N(5.0kgf) /40mm
	200	14.0	1.6	

## SA-52 (PUSH-PULL)



● With blocking rubber

■Attracting force characteristics: current characteristics



■Current Value

Model	Voltage AC (V)	Starting current (A)	Holding current (A)	Rated attracting force
				Rated stroke
SA-52	100	70.0	3.7	98.0N(10.0kgf) /40mm
	200	35.0	2.0	