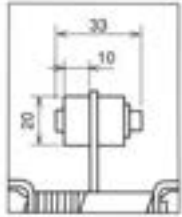




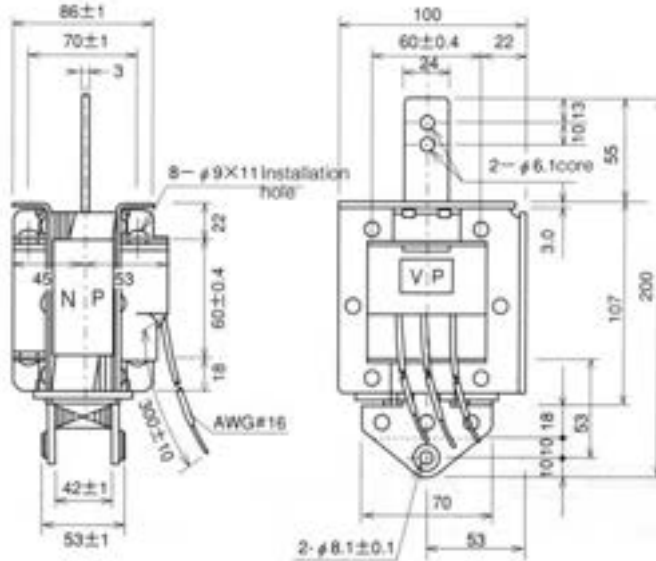
● PUSH-PULL

● PULL

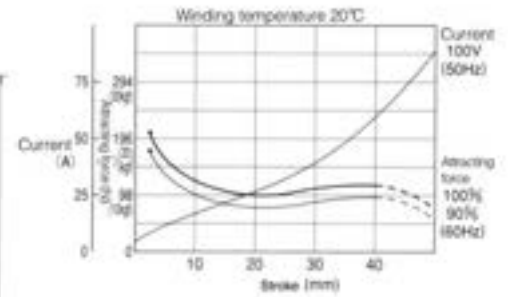
SA-55 (PUSH-PULL)



● With blocking rubber



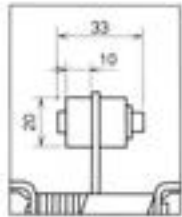
■ Attracting force characteristics: current characteristics



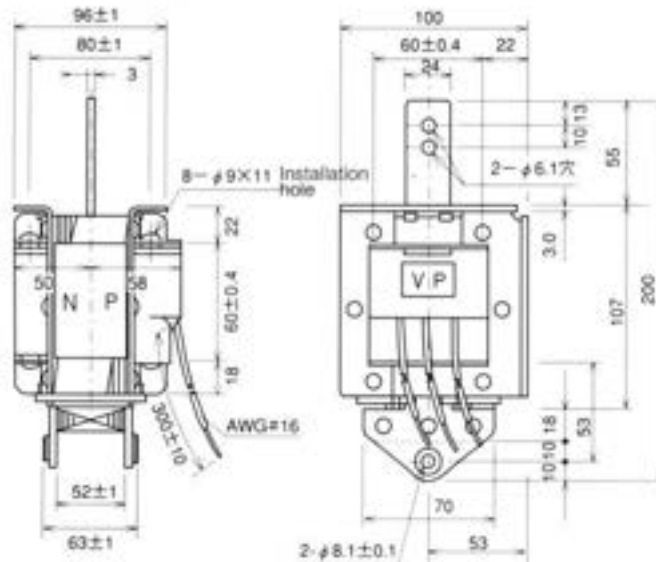
■ Current Value

Model	Voltage AC (V)	Starting current (A)	Holding current (A)	Rated attracting force / Rated stroke
SA-55	100	70.0	3.7	98.0N(10.0kgf) /40mm
	200	35.0	2.0	

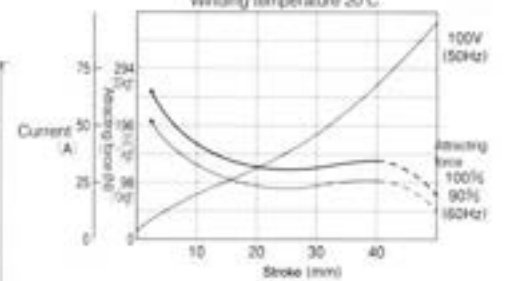
SA-56 (PUSH-PULL)



● With blocking rubber



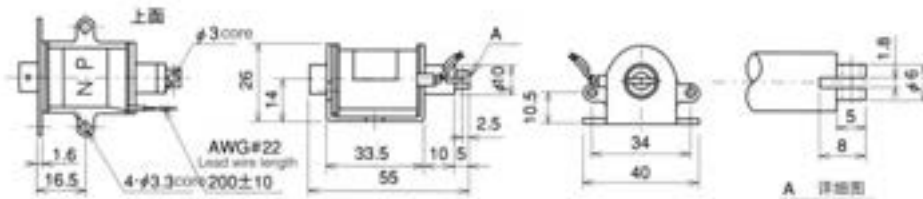
■ Attracting force characteristics: current characteristics



■ Current Value

Model	Voltage AC (V)	Starting current (A)	Holding current (A)	Rated attracting force / Rated stroke
SA-56	100	75.0	3.7	117.6N(12.0kgf) /40mm
	200	40.0	1.8	

SAL-02(PUSH-PULL)



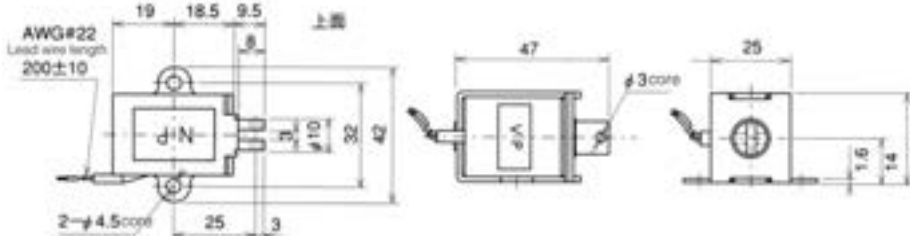
■ Characteristics

SAL-02 is a automatic reset model using built-in screw caps.



For SAL-02 and SAL-03, at duty of 1/10 and frequency of use at 6 times per minute, please use at maximum power-on time of 1 minute. Use at a condition exceeding the rating may lead to burndown of the winding.

SAL-03(PUSH-PULL)



■ Current Value

Model	Voltage AC (V)	Starting current (A)	Holding current (A)	Rated attracting force / Rated stroke
SAL-02	100	1.0	0.6	2.9N(0.3kgf) /10mm
	200	0.5	0.29	
SAL-03	100	1.0	0.42	4.9N(0.5kgf) /10mm
	200	0.5	0.22	