

# Silent DC solenoid with limit switch

Silent DC solenoid SSD series is equipped with a limit switch to indicate the action status of the solenoid.

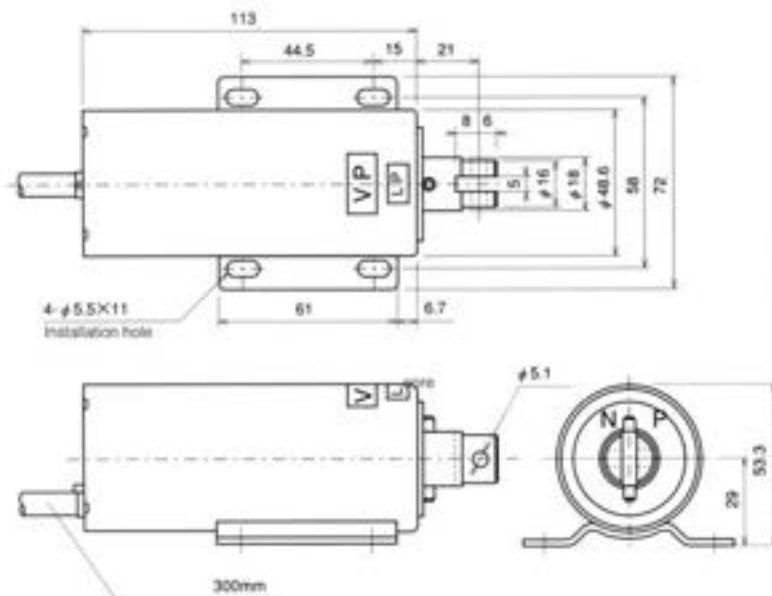
In addition, with a rectifier equipped, it can be used with AC power.

Plunger attraction: limit switch ON.

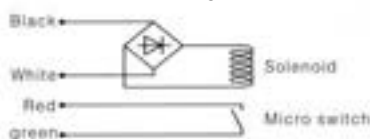
●NP: Name Plate ●VP: Voltage Plate ●LP: Lot Number



## SSD-18MD (Customized Product)



■Connection diagram (lead wire colors)



■Major parameters

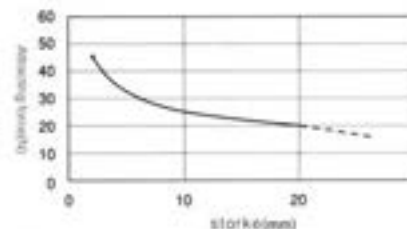
Range of attracting force	Max stroke	External pipe diameter	Movable iron core diameter
19.6N(2.0gf)	20mm	φ48.6	φ18

■Major characteristics

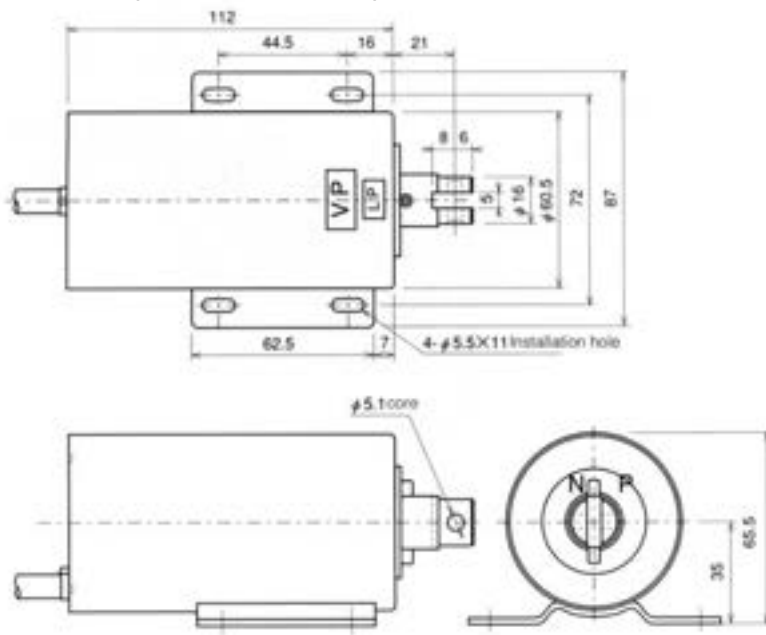
Rated voltage	AC200V 50/60Hz
Power consumption	84VA
Attracting force	19.6N(2.0kgf)
Stroke	20mm
Duty	1/6
Duty rating	Continuous power-on within 3 minutes
Temperature rise	below 65°C
Insulation type	JISC4552, Equivalent to type E insulation
Insulation resistance	Above DC500V 100MΩ
Voltage withstanding	AC1500V for 1 minute
Installation direction	Horizontal or vertical
Action mode	Pull
Micro switch rating	AC250V Below 2A DC30V Below 2A ( resistance load )
Wires	VCTF4 core x0.75mm <sup>2</sup> x300mm

Note: the minimum load of the micro switch is DC15V, 0.1A.  
Notify in addition when connecting small loads.

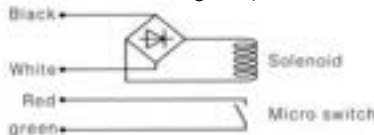
■Attracting Force Characteristic



## SSD-20MD (Customized Product)



■Connection diagram (lead wire colors)



■Major parameters

Range of attracting force	Max stroke	External pipe diameter	Movable iron core diameter
29.4N(3.0gf)	20mm	φ60.5	φ18

■Major characteristics

Rated voltage	AC200V 50/60Hz
Power consumption	120VA
Attracting force	29.4N(3.0kgf)
Stroke	20mm
Duty	1/6
Duty rating	Continuous power-on within 4 minutes
Temperature rise	below 65°C
Insulation type	JISC4552, Equivalent to type E insulation
Insulation resistance	Above DC500V 100MΩ
Voltage withstanding	AC1500V for 1 minute
Installation direction	Horizontal or vertical
Action mode	Pull
Micro switch rating	AC250V Below 2A DC30V Below 2A ( resistance load )
Wires	VCTF4 core x0.75mm <sup>2</sup> x300mm

Note: the minimum load of the micro switch is DC15V, 0.1A.  
Notify in addition when connecting small loads.

■Attracting Force Characteristic

