

Exploded View/Parts List

ASH-900 Exploded View/Parts List

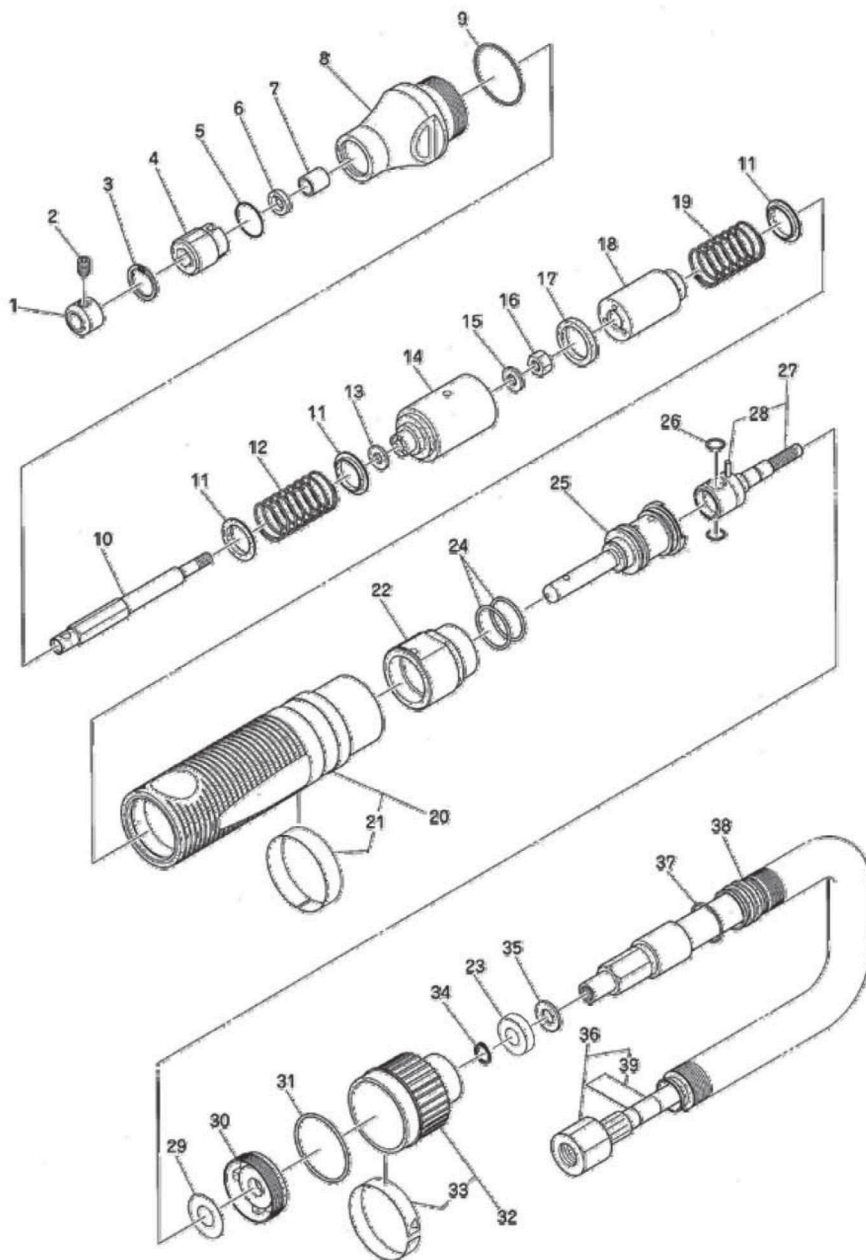
⚠ CAUTION

- Users should never perform disassembly of the tool.

This illustration is for reference only.

For repair or replacement of the tool, request service from the retailer where you purchased the tool or the nearest NITTO service member store.

Exploded view/parts list are subject to change at any time without notice. (As of Jul. 2020)



Exploded view/parts list are subject to change at any time without notice. (As of Jul. 2020)

The part numbers with () are included in the Ass'y parts written above them.

No.	Part No.	Part name	Qty
1	TQ12315	Collar	1
2	TQ00485	Hex. Socket Set Screw with Flat Point 5x6	1
3	TQ12316	Internal Retaining Ring IRTW-17	1
4	TQ12206	Guide Holder	1
5	LP06802	O-Ring S-16	1
6	TQ12317	Oil Seal G7x11x2	1
7	TQ12318	Bushing 70B-0710	1
8	TQ12305	Front Case	1
9	TP15440	O-Ring JASO-1026	1
10	TQ12209	Holder	1
11	TQ12319	Spring Holder	3
12	TQ12321	Spring 2x17.4x39	1
13	TQ12376	Washer WSSB12-5-1	1
14	TQ12207	Cylinder	1
15	LP09810	Washer M5	1
16	TQ03747	Hex. Nut M5	1
17	TQ12322	Damper	1
18	TB08333	Piston Ass'y	1 set
19	TQ12324	Spring 2x17.4x26.8	1
20	TB08654	Housing Ass'y	1 set
21	(TQ12682)	Label Warning	1
22	TQ12325	Rear Cap	1
23	TQ13319	Silencer	1
24	CP24319	O-Ring JASO-1018	2
25	TB08405	Valve Shaft Ass'y	1 set

No.	Part No.	Part name	Qty
26	TP11994	O-Ring P-4	2
27	TB03878	Hose Nipple Ass'y	1 set
28	(TP07006)	Spring Pin 2X8	1
29	TQ05002	Shim	1
30	TQ13162	Lock Plate	1
31	CP25822	O-Ring JASO-2028	1
32	TB08413	Valve Ring Ass'y	1 set
33	(TQ12327)	Label Arrow	1
34	TQ05009	External Retaining Ring STW-7	1
35	TP03822	Washer M6	1
36	TB08131	Air Hose K Ass'y	1 set
39	(TQ11519)	Label Lubrication	1
37	CP25581	O-Ring HASO-1015	1
38	TQ01125	Exhaust Hose	1

ACCESSORIES

	Part No.	Part name	Qty
		Rat Tail File SF-10	1
		Triangular Taper File SF-11	1
		Half Round File (Rat Tail / Double Cut) SF-12	1
		Flat Bastard File SF-13	1
	TP04305	Hex. Socket Screw Key 2.5	1
	TP02236	Bushing R 1/4x NPT 1/4	1
	TQ12691	Instruction Manual	1
	TQ12715	Declaration of Conformity	1