

EXPLODED DIAGRAM : SH-100A

Warning

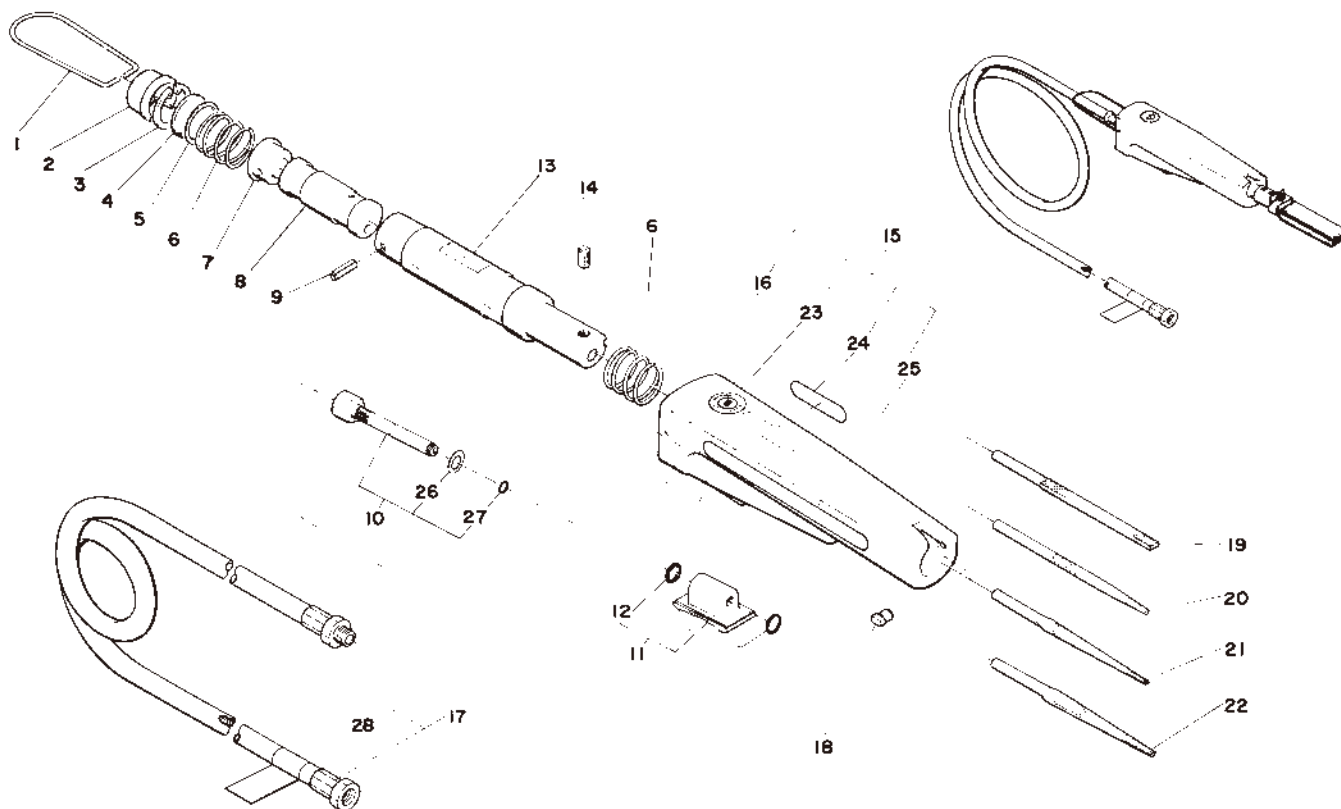
This diagram is for reference only. Do not attempt to service or repair the Tool. Do not take the Tool apart. Contact an authorized Nitto dealer for all service and repair of the Tool.

Improper service and repair can cause accidents and severe injuries.

Never attempt to modify the Tool.

Never attempt service or repair the Tool yourself.

Exploded diagram/parts list are subject to change at any time without notice. (As of Aug. 2013)



The parts numbers with () are included in the Ass'y parts written above them.

No.	Part No.	Description	Qty	Price
1	TP06496	Hanger	1	
2	TP04685	Cap	1	
3	TP04684	Retaining Ring C-22	1	
4	TP16605	Filter	1	
5	TP17352	Spacer 18x22x1	1	
6	TP04682	Spring	2	
7	TP04680	Plug	1	
8	TP08344	Piston	1	
9	TP01617	Spring Pin 4x20AW	1	
10	TA91757	Valve Nipple Ass'y	1set	
26	(TP04690)	O Ring S-5	1	
27	(TP11122)	Washer 10x13x0.8	1	
11	TA91758	Valve Ass'y	1set	
12	(TP12002)	O Ring AS 568A-011	2	
13	TP08343	Cylinder	1	
14	TP06141	Hex. Socket Set Screw 6x6	1	
15	TB08653	Housing Ass'y	1set	
16	(TP16604)	Housing	1	

No.	Part No.	Description	Qty	Price
23	(TP04218)	Name Plate	1	
24	(TP09746)	Label	1	
25	(TQ12683)	Label Warning	1	
17	TB07904	Air Hose E Ass'y	1set	
28	(TQ11519)	Label Lubrication	1	
18	TP05818	Guide Key	1	

Accessories

No.	Part No.	Description	Qty	Price
19	TP00703	Flat Bastard File SF-13	1	
20	TP00700	Rat Tail File SF-10	1	
21	TP00701	Triangular Taper File SF-11	1	
22	TP00702	Half Round File (Rat Tail / Double Cut) SF-12	1	
	TP04696	Hex. Socket Screw Key3	1	
	TP02236	Bushing R1/4xNPT1/4	1	
	TQ12692	Instruction Manual	1	
	TQ12715	Declaration of Conformity	1	