

CEM3-GDATA TORK/
Digital Torque
Wrench

Direction



RoHS



CEM100N3×15D-G



Inspection

Digital

Interchangeable

Direct Reading

Re-Chargeable

ISO6789:2003

- Dual LED & LCD displays for optimal viewing
- 999 memory storage capacity
- For inspection and tightening



CEM20N3×10D-G



CEM850N3×32D-G

Common Specifications

Display	7 segments LED 4 lines 10mm (Torque value)
	14 segments LCD 3 lines 7mm (Counter)
	7 segments LCD 4 lines 3mm (Clock)
	Battery life indicator (4 steps)
Judgment LED RED/BLUE	
Number of Data Memory	999 (M-2 mode: 99 data)
Communication	RS232C (2400-19200bps)
Functions	Serial output corresponding to a USB connector
Power Supply	Ni-MH rechargeable battery
Continuous Use	20 hrs with fully charged (8 hours by 1 hour recharging)
Recharging Time	3.5 hours
Operating Temperature	0-40 °C
Basic Functions	Peak Hold, Auto memory & resetting, Tightening completion buzzer, Judgment of measured data, Auto zero setting, Auto off (3 minutes), Clock

												Accuracy ±1%		
Model	Torque Range										Hand Force [N]	Overall Length [mm]	Weight [kg]	
	N·m		kgf·cm		kgf·m		lbf·in		lbf·ft					
	Min.-Max.	1digit	Min.-Max.	1digit	Min.-Max.	1digit	Min.-Max.	1digit	Min.-Max.	1digit				
CEM10N3×8D-G	2-10	0.01	20-100	0.1	0.200-1.000	0.001	20.0-90.0	0.1	1.50-7.30	0.01	48.1	212	0.46	
CEM20N3×10D-G	4-20	0.02	40-200	0.2	0.400-2.000	0.002	36.0-180.0	0.2	3.00-14.50	0.02	92.2	214	0.47	
CEM50N3×12D-G	10-50	0.05	100-500	0.5	1.000-5.000	0.005	100.0-440.0	0.5	7.50-36.00	0.05	196.9	282	0.58	
CEM100N3×15D-G	20-100	0.1	200-1000	1	2.00-10.00	0.01	200-880	1	15.0-73.0	0.1	275.5	384	0.63	
CEM200N3×19D-G	40-200	0.2	400-2000	2	4.00-20.00	0.02	360-1700	2	30.0-150.0	0.2	428.3	475	0.78	
CEM360N3×22D-G	72-360	0.4	720-3600	4	7.2-36.00	0.04	650-3100	4	52.0-260.0	0.4	498.6	713	1.13	
CEM500N3×22D-G	100-500	0.5	1000-5000	5	10.00-50.00	0.05	890-4400	5	73.0-360.0	0.5	549.5	949	4.00	
CEM850N3×32D-G	170-850	1	-	-	17.0-85.0	0.1	-	-	124-620	1	608	1387	5.14	

Accuracy ±1%

Note

1. Overall length does not include interchangeable head.
2. For interchangeable head, refer to page 45-48.
3. PH Pipe wrench head type interchangeable head is not available for this model.
4. CEM500N3×22D-G and CEM850N3×32D-G have knurled handles.
5. For USB data transfer, use optional connecting cable, No.584. Refer to page 50.

Standard Accessories

1. Battery pack/BP-5
2. QH interchangeable head. Refer to page 47.
3. Quick battery charger/BC-3-G (100-240V).

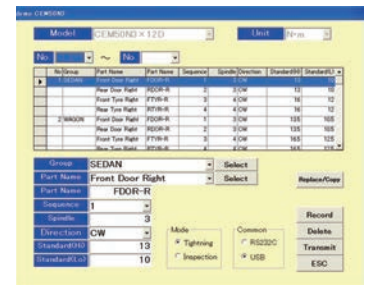
CEM3-P RoHS

- Programmable version of CEM3-G with data management software that links work name with test results.

Torque Accuracy	±1%
Portion Registration Memory	Max. 100 parts (Part name, number of screws, tightening direction, high/low torque, measuring order)
Measurement Data Storage	Up to 3,000 screw data (vary depending on parts registered), measurement part name, measured value, pass/fail judgment, measurement time and date)



CEM50N3×12D-P

Display part
Left: Part name, Right: Torque value

CEM3-P application software

Model
CEM10N3×8D-P
CEM20N3×10D-P
CEM50N3×12D-P

Model
CEM100N3×15D-P
CEM200N3×19D-P
CEM360N3×22D-P

Model
CEM500N3×22D-P
CEM850N3×32D-P

Battery Pack (P.50)

Model
BP-5

Quick Battery Charger (P.50)

Model	Description
BC-3-G	100V-240V

Printer (P.69)

Model
EPP16M3

Connecting Cable (P.50)

Part #	Applicable Model
575	CEM3-G, CEM3-P, R-DT999 - PC, EPP16M3
584	CEM3-G, CEM3-P, R-DT999G - PC

Handy Terminal

Compact data collection device for CEM3-G

- Upload & download torque measuring information
- Guides user through torque assembly & quality inspection processes
- Statistics and charting capabilities
- Contact Tohnichi for lithium battery shipping specifications.

