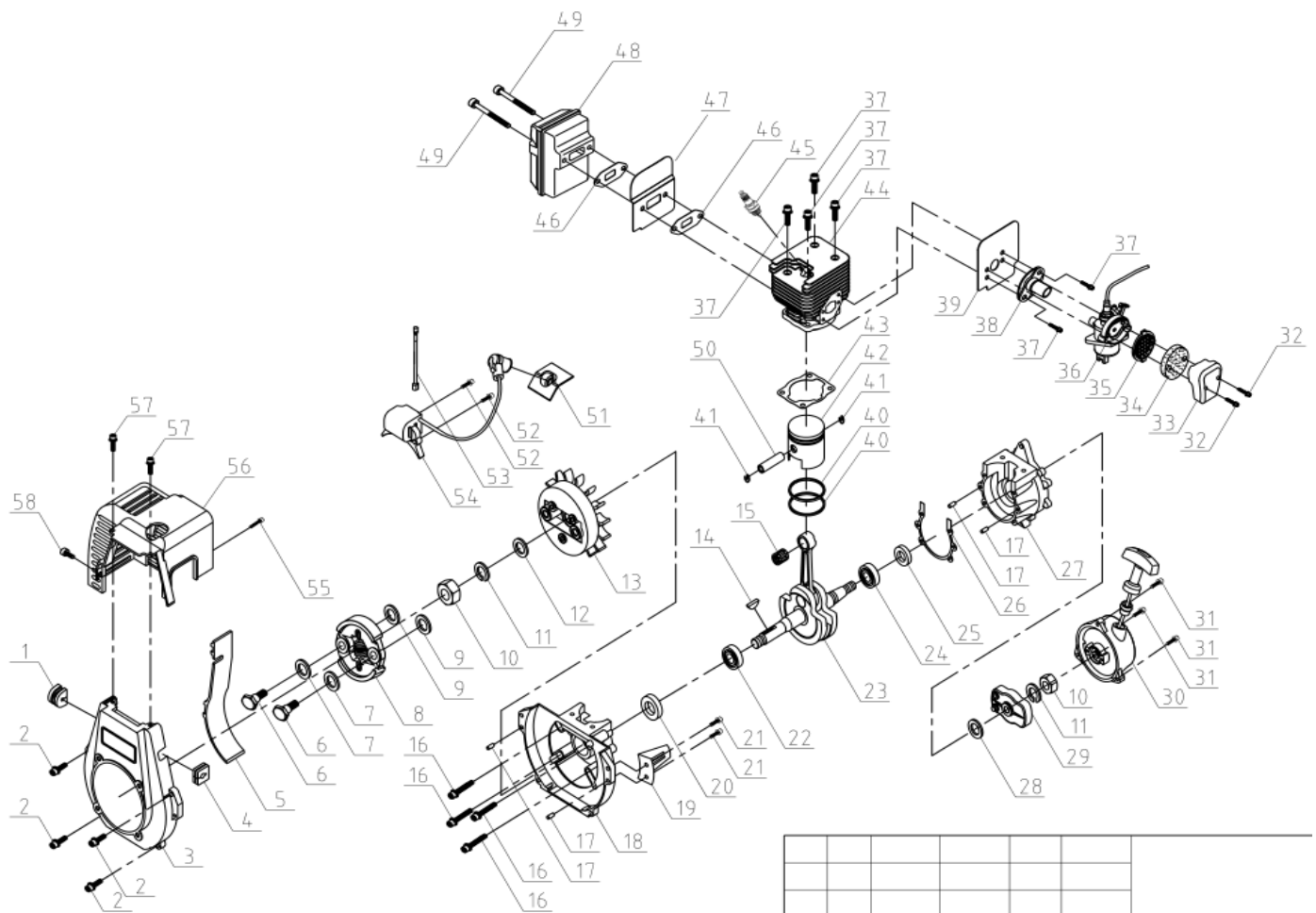


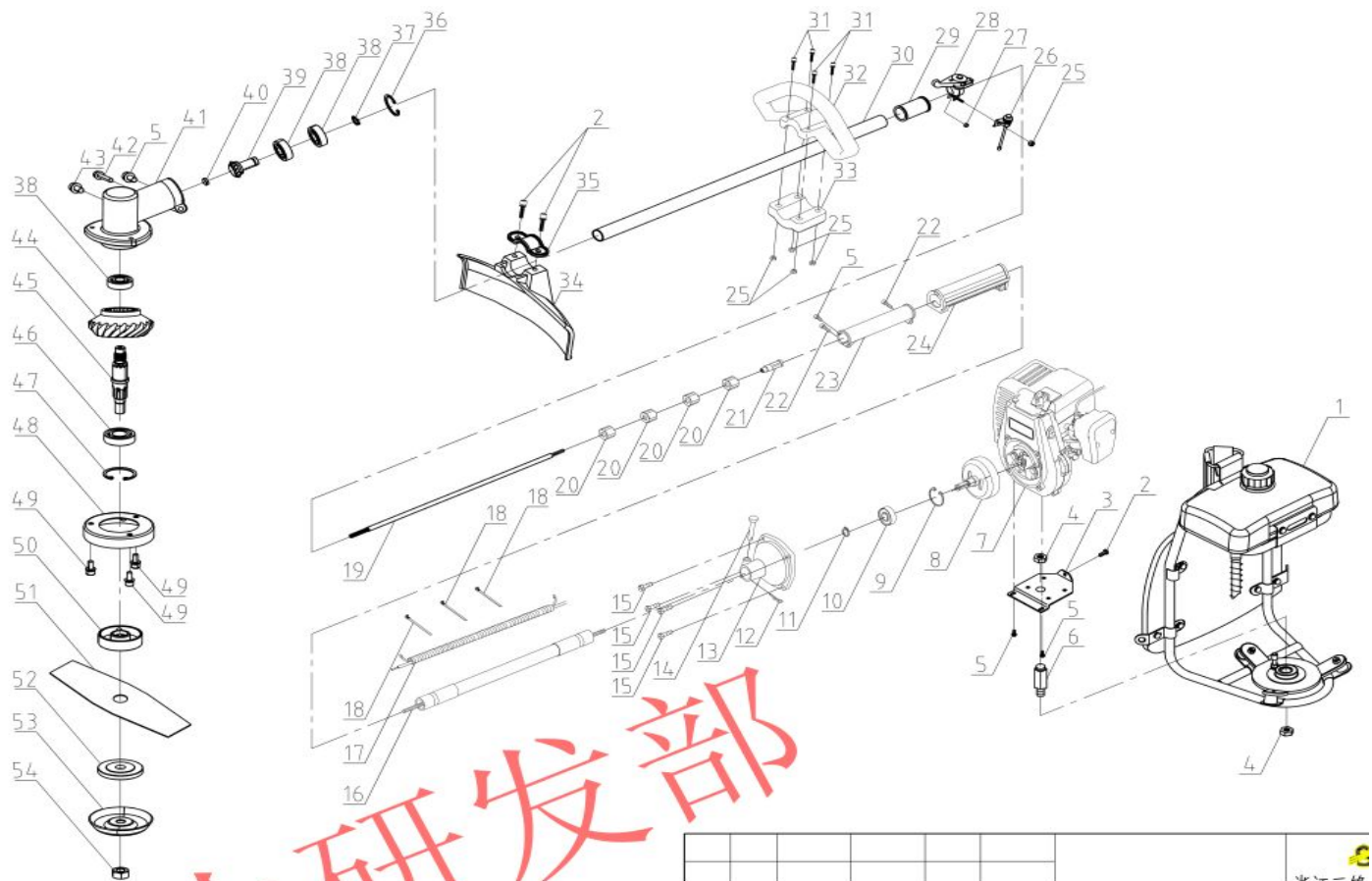
Parts engine exploded view Model: PL-BG430



NO.	PARTS NUMBER	CHINESE NAME	ENGLISH NAME	QTY /PC MACHINE
1	1E40F-5CG.10-5	橡胶塞	rubble plug	1
2	GB70-85	内六角组合螺钉M5×20	Hexagon socket set screw M5 x 20	4
3	1E40F-5CG.10-1	风扇罩	fan cover	1
4	1E40F-5CG.6-2.7	高压线夹	coil cable clip	1
5	1E40F-5CG.10-4	导风板	Wind deflector	1
6	1E40F-5CG.7-2	台阶螺栓 M8×24	Step bolt M8×24	2
7	GB/T7246-87	波形垫圈 10.5×14.5	Waveform washer 10.5×14.5	2
8	1E40F-5CG.7-1	离合器部件	clutch	1
9	GB/T97.2	平垫圈 8×16×2	flat washer 8×16×2	2
10	GB/T6177.1-00	六角法兰螺母M8	Hexagon flange nut M8	2
11	GB/T93	弹簧垫圈 8	Spring washer 8	1
12	GB/T97.2	平垫圈 8	Flat washer 8	1
13	1E40F-5CG.6-1	磁飞轮部件	flywheel	1
14	GB/T1099-79	半圆键 3×5×13	Woodruff key 3 x 5 x 13	1
15	JB/T7918-97	滚针轴承K9×13×14	needle bearing K9×13×14	1
16	GB70-85	内六角组合螺钉M5×30	Hexagon socket set screw M5 x 30	4
17	GB/T119-86	销 A4×10	pin A4×10	4
18	1E40F-5CG.5-1	左曲轴箱	left crankcase	1
19	1E40F-5CG.5-4	防护板	protective plate	1
20	GB/T9877.1	油封 15×25×7	oil seal 15×25×7	1
21	GB70-85	内六角组合螺钉M5×8	Hexagon socket set screw M5 x 8	2
22	GB/T276-94	轴承 6202/P5	bearing 6202/P5	1
23	1E40F-5CG.4-1	曲轴连杆部件	crankshaft	1
24	GB/T276-94	轴承 6002/P5	bearing 6002/P5	1
25	GB/T9877.1	油封 12×22×7	oil seal 12×22×7	1
26	1E40F-5CG.5-3	曲轴箱垫片	gasket of crankcase	1
27	1E40F-5CG.5-2	右曲轴箱	right crankcase	1
28	1E40F-5CG.8-3	垫圈	gasket	1

29	1E40F-5CG.8-2	起动拨盘部件	starter dial	1
30	1E40F-5CG.8-1	起动器部件	starter assy	1
31	GB70-85	内六角组合螺钉M4×16	Hexagon socket set screw M4×16	3
32	GB9074.13	十字组合螺钉M4×25	Cross combination screw M4×25	2
33	1E40F-5CG.1-1.1	空滤器外壳	air filter cover	1
34	1E40F-5CG.1-1.2	空滤器海绵	air filter sponge	1
35	1E40F-5CG.1-1.3	空滤器内壳	air filter insert	1
36		化油器	carburetor	1
37	GB70-85	内六角组合螺钉M5×20	Hexagon socket set screw M5 x 20	2
38	1E40F-5CG.1-3	进气管	inlet pipe	1
39	1E40F-5CG.1-4	进气管垫片	gasket of inlet pipe	1
40	1E40F-5CG.3-4	活塞环	piston ring	2
41	1E40F-5CG.3-3	活塞销挡圈	e-type ring	2
42	1E40F-5CG.3-1	活塞部件	piston	1
43	1E40F-5CG.2-2	汽缸垫片	gasket of cylinder	1
44	1E40F-5CG.2-1	汽缸	cylinder	1
45	L7T LD	火花塞	spark plug	1
46	1E40F-5CG.9-2	消声器垫片	gasket of muffler	2
47	1E40F-5CG.10-3	缸体导风板	Air guide plate for cylinder block	1
48	1E40F-5CG.9-1	消声器部件	muffler	1
49	GB70-85	内六角组合螺钉M6×60	Hexagon socket set screw M6×60	2
50	1E40F-5CG.3-2	活塞销	piston pin	1
51	1E40F-5CG.6-2.4-3	高压帽	ignition coil cap	1
52	GB70-85	内六角组合螺钉M4×20	Hexagon socket set screw M4×20	2
53	1E40F-5CG.6-2.2/2.3	熄火线、接地线	Extinguishing wire, grounding wire	1
54	1E40F-5CG.6-2	高压包部件	ignition coil	1
55	GB70-85	内六角组合螺钉M5×12	Hexagon socket set screw M5×12	1
56	1E40F-5CG.10-2	汽缸罩	cylinder cover	1
57	GB70-85	内六角组合螺钉M4×12	Hexagon socket set screw M4×12	2
58	GB70-85	内六角组合螺钉M4×10	Hexagon socket set screw M4×10	2

Parts Shaft exploded view Model: PL-BG430



NO.	PARTS NUMBER	CHINESE NAME	ENGLISH NAME	QTY/MACHINE
1	1E40F-5.4-6	背架总成	Harness assembly	1
2	GB70-85	内六角组合螺钉M6×16	Hexagon socket set screw M6×16	3
3	1E40F-5.4-8	上支撑板	upper support plate	1
4	GB889.2	细牙六角锁紧螺母	Hexagonal lock nut with fine teeth M10x1.25	2
5	GB70-85	内六角组合螺钉M5×12	Hexagon socket set screw M5×12	4
6	1E40F-5.4-7	立柱	post	1
7	1E40F-5CG	1E40F-5汽油发动机	engine	1
8	1E40F-5.1-1.4	被动盘	clutch drum	1
9	GB/T893.1-86	孔用弹性挡圈 35	Elastic retainer 35 for holes	1
10	GB/T276-94	深沟球轴承6202-2RS	needle bearings 6202-2RS	1
11	GB/T894.1-86	轴用弹性挡圈 15	Shaft with elastic retainer 15	1
12	1E40F-5.1-1.3	R开口销	R split pin	1
13	1E40F-5.1-1.1	连接盘	Connection plate	1
14	1E40F-5.1-1.2	定位销	positioning pin	1
15	GB70-85	内六角组合螺钉M6×20	Hexagon socket set screw M6×20	4
16	1E40F-5.2-3	软轴总成	Soft shaft assembly	1
17	1E40F-5.4-5	油门熄火线束组件	Throttle shut off wire assembly	1
18	1E40F-5.4-9	扎带	tie	3
19	1E40F-5.2-2	硬轴	shaft	1
20	1E40F-5.2-3	含油轴承组件∅23.5X∅8	oil bearing ∅23.5X∅8	4
21	1E40F-5.2-4	联轴节	coupling	1
22	GB70-85	内六角组合螺钉M5×20	Hexagon socket set screw M5 x 20	2
23	1E40F-5.2-5	铝手把	aluminum handle	1
24	1E40F-5.2-6	手把胶套	aluminum rubble sleeve	1
25	GB6170-00	1型六角螺母M5	1-type Hex nut M5	5
26	1E40F-5.4-3	停车开关组件	switch	1
27	1E40F-5.4-4	螺钉过套	screw sleeve	1
28	1E40F-5.4-1	油门控制开关	throttle control	1
29	1E40F-5.4-2.2	提手把A减震套	damper sleeve of handle A	1

30	1E40F-5.2-1	铝管	aluminum tube	1
31	GB70-85	内六角组合螺钉M5×30	Hexagon socket set screw M5 x 30	2
32	1E40F-5.4-2.3	提手把A	handle A	1
33	1E40F-5.4-2.1	提手把A压板	clamp of handle	1
34	1E40F-5.5-1	防护罩C	protective cover	1
35	1E40F-5.5-2	C护罩压板	clamp of protective handle	1
36	GB/T893.1-86	孔用弹性挡圈 26	Elastic retainer for hole 26	1
37	GB/T894.1-86	轴用弹性挡圈 10	Elastic retainer 10 for shaft	1
38	GB/T276-94	深沟球轴承6000-2RS	needle bearings 6000-2RS	3
39	1E40F-5.3-1.2	主动齿轮 15T-9T	Driving gear 15T-9T	1
40	1E40F-5.3-1.5	油堵	Oil plug	1
41	1E40F-5.3-1.1	齿轮箱	gear head	1
42	GB70-85	内六角组合螺钉M5×25	Hexagon socket set screw M5×25	1
43	GB70-85	内六角组合螺钉M6×10	Hexagon socket set screw M6×10	1
44	1E40F-5.3-1.3	从动齿轮 20T	Driven gear 20T	1
45	1E40F-5.3-1.4	花键轴	Spline shaft	1
46	GB/T276-94	深沟球轴承6002-2RS	needle bearings 6002-2RS	1
47	GB/T893.1-86	孔用弹性挡圈 32	Elastic retainer 32 for holes	1
48	1E40F-5.3-1.6	防尘盖	Dust cover	1
49	GB70-85	内六角组合螺钉M5×10	Hexagon socket set screw M5 x 10	3
50	1E40F-5.3-1.7	刀片座	blade holder	1
51	1E40F-5.6-1	两齿刀片	2T blade	1
52	1E40F-5.3-1.8	刀片压板	clamp of blade	1
53	1E40F-5.3-1.9	刀片保护盖	protective cap of blade	1
54	GB/T6183.2-00	在康福牙非金屬嵌件六角法蘭面鎖緊螺母M10×1.25-6H	Hexagon flange face locking nut M10× 1.25-6H with non-metallic insert for fine teeth	1