

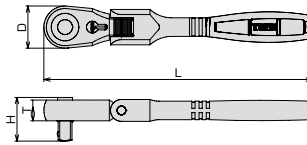
RATCHET HANDLE, FLEX HEAD(SOCKET HOLD TYPE)

Models	Square Drive (mm)	Dimensions (mm)				Qty./ Carton (Generally)	Weight (g)
		D	H	T	L		

RH4FH	12.7	32	34	15.5	328	6	600
-------	------	----	----	------	-----	---	-----



※ A repair kit (RK-RH4FH) is available for separate purchase. Please see P191 for details.
 ※ This product is registered design.



72-tooth gear with feed angle of 5°. Head tilts by 15 degree. Easy to grip. Exchange socket with one-push button.



Wedge type

Good Design award



RH4FH

Socket holding mechanism



※ When attaching or removing, please make sure to pressing a push button.

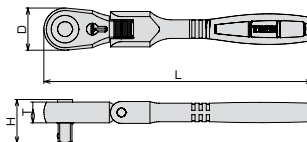
LONG RATCHET HANDLE, FLEX HEAD(SOCKET HOLD TYPE)

Models	Square Drive (mm)	Dimensions (mm)				Qty./ Carton (Generally)	Weight (g)
		D	H	T	L		

RH4FHL	12.7	32	34	15.5	428	6	720
--------	------	----	----	------	-----	---	-----



※ A repair kit (RK-RH4FH) is available for separate purchase. Please see P191 for details.
 ※ This product is registered design.



72-tooth gear with feed angle of 5°. Head tilts by 15 degree. Easy to grip. Exchange socket with one-push button. Long size is suitable for places where are difficult to touch.



Wedge type

Good Design award



RH4FHL

Socket holding mechanism



※ When attaching or removing, please make sure to pressing a push button.

CAUTION

- Do not over torque, as the whole length is long enough to apply excessive load.

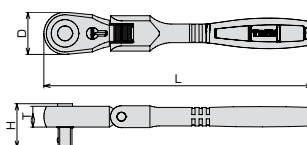
EXTRA-LONG RATCHET HANDLE, FLEX HEAD(SOCKET HOLD TYPE)

Models	Square Drive (mm)	Dimensions (mm)				Qty./ Carton (Generally)	Weight (g)
		D	H	T	L		

RH4FHX	12.7	32	34	15.5	628	3	960
--------	------	----	----	------	-----	---	-----



※ A repair kit (RK-RH4FH) is available for separate purchase. Please see P191 for details.
 ※ This product is registered design.



72-tooth gear with feed angle of 5°. Head tilts by 15 degree. Easy to grip. Exchange socket with one-push button. Extra long size is suitable for places where are difficult to touch.



Wedge type

Good Design award



RH4FHX

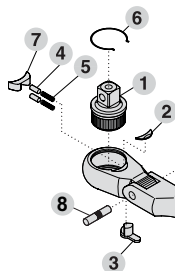
Socket holding mechanism



※ When attaching or removing, please make sure to pressing a push button.

CAUTION

- Do not over torque, as the whole length is long enough to apply excessive load.



Repair kit

Models RK-RH4FH

Suitable model : RH4FH, RH4FHL, RH4FHX
 Parts table No.1-8 is one set.

Parts table

NO.	Descriptions	Qty.
1	Gear Assembly	1
2	Dust cap	1
3	Small Handle	1
4	Bush	2
5	Spring	2
6	Retaining Ring	1
7	Wedge	1
8	Pin	1

CAUTION

- Repair may be difficult for the general public.
- We do not sell parts by part.



CAUTION

- Use ratchet handles slowly and softly.
- Switch over the direction completely.