

SOCKET WRENCH

For manual

19.0

STAINLESS TOOL
TITANIUM TOOL

TOOL SET

TOOL CASE

SOCKET
WRENCH

HEXAGON
WRENCH

T-TYPE
WRENCH

SPANNER
OFFSET WRENCH

SCREWDRIVER

BIT

ADJUSTABLE
WRENCH
PLIERS

SPECIALIZED
CAR EQUIPMENT

CYCLE TOOL

LED LIGHT

OTHER HAND
TOOLS

TORQUE
WRENCH

AIR TOOL

Oval head standard ratchet handle.

sq.dr
19.0
mm
3/4"

TEETH
24

Claw type



471S

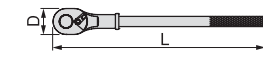
471B

How to distinguish a new type
A new type will have N indication
behind its model number (471N).

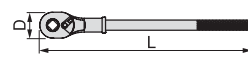
RATCHET HANDLE

Models	Square Drive (mm)	Dimensions (mm)				Qty./Carton		Weight (g)
		D	H	T	L	(Generally)	(Store Center)	
471	19.0	61	50.9	28.2	500	10	1	1,925
471S	19.0	61	50.9	28.2	400	1	—	1,800
471B	19.0	61	29.9	—	500	1	—	1,780

※ This product is registered design.



471, 471S



471B

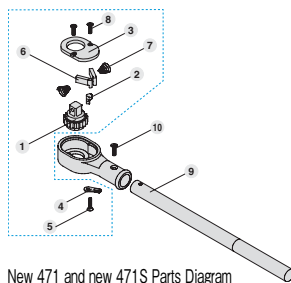
CAUTION

- Use ratchet handles slowly and softly.
- Switch over the direction completely.

Repair kit

Models **RK-471N**

Parts table No.1-8 is one set.



New 471 and new 471S Parts Diagram

New 471 and new 471S Parts table

NO.	Descriptions	Qty.
1	Gear	1
2	Cam1	1
3	Lid 1	1
4	Switching handle	1
5	Screw (Torx bolt M3x8(T10))	1
6	Claw	2
7	Spring	2
8	Screw (Torx bolt M4x6(T20))	2

NO.	Model	Descriptions	Qty.
9	GP471H	The pipe handle (only 471)	1
	GP471SH	The pipe handle (only 471S)	1
10	GP471V1	Screw (+) (Flat head tapping screw M6x14.6)	1

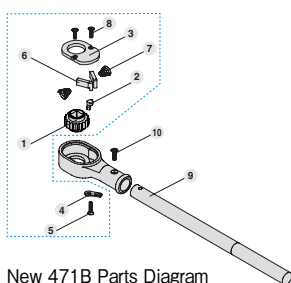
CAUTION

- Repair may be difficult for the general public.
- We do not sell parts by part.

Repair kit

Models **RK-471BN**

Parts table No.1-8 is one set.



New 471B Parts Diagram

New 471B Parts table

NO.	Descriptions	Qty.
1	Gear	1
2	Cam	1
3	Lid	1
4	Switching handle	1
5	Screw (Torx bolt M3x8(T10))	1
6	Claw	2
7	Spring	2
8	Screw (Torx bolt M4x6(T20))	2

NO.	Model	Descriptions	Qty.
9	GP471H	The pipe handle	1
10	GP471V1	Screw (+) (Flat head tapping screw M6x14.6)	1

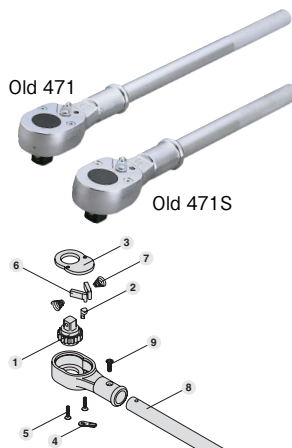
CAUTION

- Repair may be difficult for the general public.
- We do not sell parts by part.

Repair kit

Models **RK-471**

Parts table No.1-7, 9 is one set.



Old 471 and old 471S Parts Diagram

Old 471 and old 471S Parts table

NO.	Model	Descriptions	Qty.
1	GP471G	Gear	1
2	GP471P	Cam	1
3	GP471C	Lid	1
4	GP471L	Switching handle	1
5	GP471V	Screw (+) countersunk head screw M5 x 29	2
6	GP471N	Claw	2
7	GP471S	Spring	2
8	GP471H	The pipe handle (only 471)	1
	GP471SH	The pipe handle (only 471S)	1
9	GP471V1	Screw (+) (Flat head tapping screw M6x14.6)	1

※ The part will be count as 1 item regardless of its quantity (in case of 2, 2set).

CAUTION

- Repair may be difficult for the general public.



Old 471B Parts Diagram

Repair kit

Models **RK-471B**

Parts table No.1-8 is one set.

Old 471B Parts table

NO.	Model	Descriptions	Qty.
1	GP471BG	Gear	1
2	GP471P	Cam	1
3	GP471C	Lid	1
4	GP471L	Switching handle	1
5	GP471V	Screw (+) countersunk head screw M5 x 29	2
6	GP471N	Claw2	2
7	GP471S	Spring	2
8	GP471H	Pipe handle 1	1
9	GP471V1	Screw (+) (Flat head tapping screw M6x14.6)	1

※ The part will be count as 1 item regardless of its quantity (in case of 2, 2set).

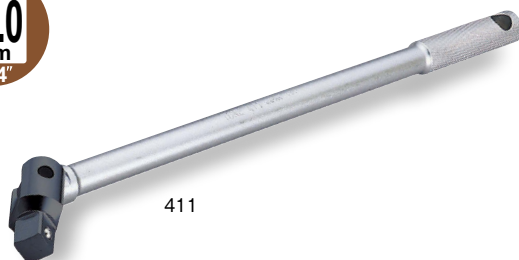
CAUTION

- Repair may be difficult for the general public.

Head pivots up to 90 degrees for both sides.

Use the handle upright for temporary tightening, and lays the handle on its side for final tightening

sq.dr
19.0
mm
3/4"

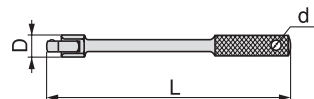


411

SPINNER HANDLE

Models	Square Drive (mm)	Dimensions (mm)			Qty./Carton		Weight (g)
		D	d	L	(Generally)	(Store Center)	
411	19.0	38	16.8	500	1	1	1,550

Combine spinner handle 411 with crossbar CB60 (P210) to use it as a T-shaped handle.



CAUTION

- Do not use with extension pipe etc.
- Avoid giving shock by hitting with hammer etc.
- Insert square drive positively to the bottom.

