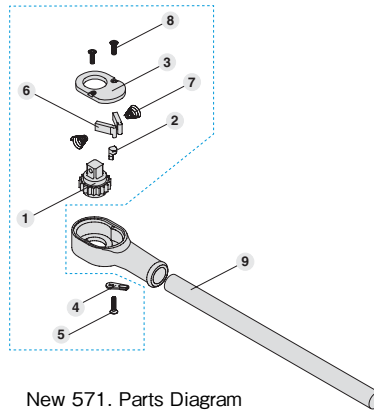


Repair kit

Models **RK-572N**

Suitable model : 571, 572

The kit contains parts No.1-8.



New 571. Parts Diagram

New 571 and new 572 Parts table

NO.	Descriptions	Qty.
1	Gear	1
2	Cam	1
3	Lid	1
4	Switching handle	1
5	Screw (Torx bolt M3x8 (T10))	1
6	Claw	2
7	Spring	2
8	Screw (Torx bolt M4x6 (T20))	2

NO.	Model	Descriptions	Qty.
9	113	A crossbar 113.	1

CAUTION

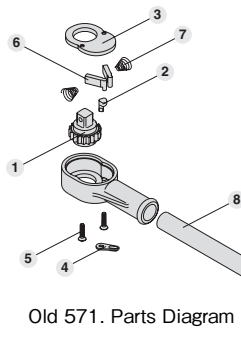
- Repair may be difficult for the general public.
- We do not sell parts by part.

It's possible to use for both of 571 and 572.

Repair kit

Models **RK-572**

Suitable model : Old 571, old 572. The kit contains parts No.1-7.



Old 571. Parts Diagram

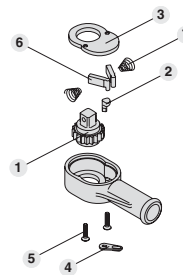
Old 571. Parts table

NO.	Model	Descriptions	Qty.
1	GP572G	Gear	1
2	GP471P	Cam	1
3	GP572C	Lid	1
4	GP471L	Switching handle	1
5	GP572V	Screw (I+) countersunk head screw M5 x 32)	2
6	GP572N	Claw	2
7	GP471S	Spring	2
8	113	A crossbar 113.	1

※The part will be count as 1 item regardless of its quantity (in case of 2, 2set).



Old 571.



Old 572. Parts Diagram

Old 572. Parts table

NO.	Model	Descriptions	Qty.
1	GP572G	Gear	1
2	GP471P	Cam	1
3	GP572C	Lid	1
4	GP471L	Switching handle	1
5	GP572V	Screw (I+) countersunk head screw M5 x 32)	2
6	GP572N	Claw	2
7	GP471S	Spring	2

※The part will be count as 1 item regardless of its quantity (in case of 2, 2set).



Old 572.

T-TYPE SLIDE HANDLE

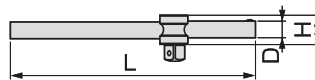
Models	Square Drive (mm)	Dimensions (mm)			Qty./ Carton (Generally)	Weight (g)
		D	H	L		
415	25.4	28	52	660	1	3,820
416	25.4	—	52	—	1	620

※ 415 is square drive department 416 and crossbar 113 (P214).

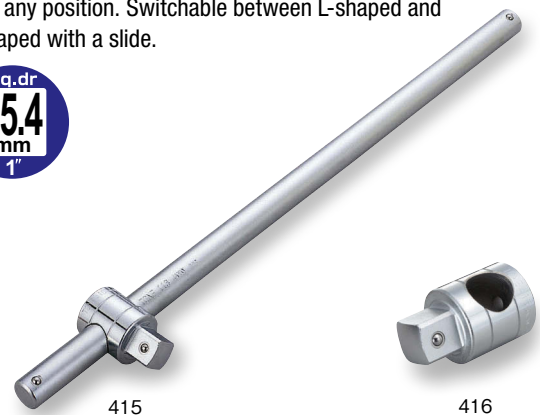
※ 416 is only the square drive part.

CAUTION

- Do not use with extension pipe etc.
- Avoid giving shock by hitting with hammer etc.
- Insert square drive positively to the bottom.



With a square drive on a slide handle, making it possible to work from any position. Switchable between L-shaped and T-shaped with a slide.

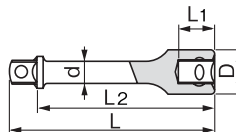


415

416

EXTENSION BAR

Models	Square Drive (mm)	Dimensions (mm)					Qty./ Carton (Generally)	Weight (g)
		D	L ₁	L ₂	L	d		
612	25.4	46	31	122	150	25	1	870
EX80-200	25.4	46	31	172	200	25	1	1,055
EX80-250	25.4	46	31	222	250	25	1	1,260
613	25.4	46	31	372	400	25	1	1,820



Suitable for narrow, deep places as extending socket.



612

EX80-250

CAUTION

- Do not use with power tools.
- Do not assemble multiple attachments. (Extension bar, Universal joint, Socket adaptor, Quick adaptor)



For hand tool