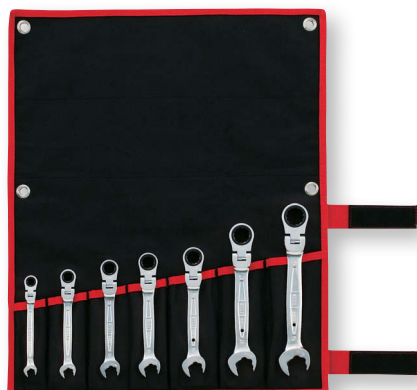


Without having to remove and reinsert the wrench, allowing user to work smoothly. The 15° offset part combining with slim and straight body make it possible to work in confined space. The design comes with hanging hole for fall prevention cable (only RMF-14 and larger size).

Good Design award winning item

Quick Flex Head Ratchet type



RMFQ700

Ratchet wrench set of the next generation within a metal case.

**NEW**

Good Design award winning item



RMFQ110

Good Design award



RMFQ-08

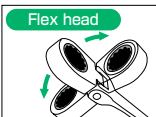
RMFQ-17

**The wrench part**

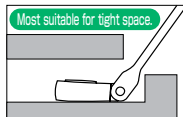
A special head design allows user to work smoothly without having to remove and reinsert the wrench.

**CAUTION**

- Do not apply too much force when using open-end portion.



Product video



## RATCHET RING WRENCH SET, RATCHETING SPANNER HEAD, FLEX HEAD

Models **RMFQ700**

Contents **7 Items**

Models	RMFQ-	08	10	12	13	14	17	19
Across Flat(mm)		8	10	12	13	14	17	19

- Tool bag (BNRM7L)
- Weight : 1.02kg
- Qty./Carton : 1

※ A tool bag is available for separate purchase. Please see P115.  
※ It is changed into the one with 15° angle arrangement mechanism.

Easy to store and carry!!



Models **RMFQ110**

Contents **11 Items**

Models	RMFQ-	08	10	12	13	14	15	16	17	18	19	21
Across Flat(mm)		8	10	12	13	14	15	16	17	18	19	21

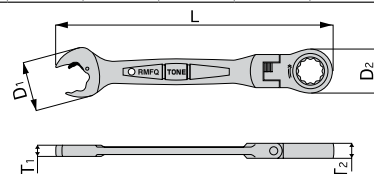
- Tool case : MCT2
- Package size : w406 × d120 × h60mm
- Weight : 2.73kg
- Qty./Carton : 6

## RATCHET RING WRENCH, RATCHETING SPANNER HEAD, FLEX HEAD

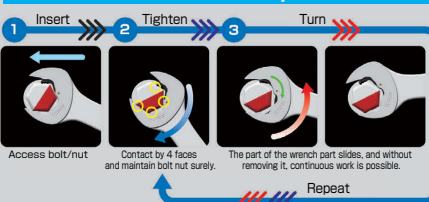
Models	Across Flat (mm)	Dimensions (mm)					Qty./ Carton (Generally)	Weight (g)
		D <sub>1</sub>	D <sub>2</sub>	T <sub>1</sub>	T <sub>2</sub>	L		
RMFQ-08	8	16.2	16.7	4.1	6.5	127	10	35
RMFQ-10	10	20.3	20.0	4.8	7.3	136	10	55
RMFQ-12	12	24.3	23.0	5.3	8.2	148	10	75
RMFQ-13	13	26.8	25.2	5.9	8.6	155	10	90
RMFQ-14	14	28.7	26.8	6.3	9.0	161	10	110
RMFQ-15	15	30.5	28.3	6.6	9.4	170	10	125
RMFQ-16	16	32.9	29.8	6.9	9.9	180	10	150
RMFQ-17	17	34.5	31.8	7.3	10.3	190	10	170
RMFQ-18	18	37.0	32.8	7.8	10.7	203	10	195
RMFQ-19	19	39.2	33.9	8.3	11.2	215	10	220
RMFQ-21	21	46.0	40.0	8.8	13.0	274	10	400
RMFQ-22	22	46.0	40.0	8.8	13.0	274	10	390
RMFQ-24	24	52.2	46.0	9.8	14.5	296	10	540

- With safety rope attaching hole(RMFQ-14 and larger)

※ In case of out-of-stock, non-locking flex head will be automatically changed to locking flex head (15° angle each turn).



### How to use the wrench part



### How to use the glasses part

