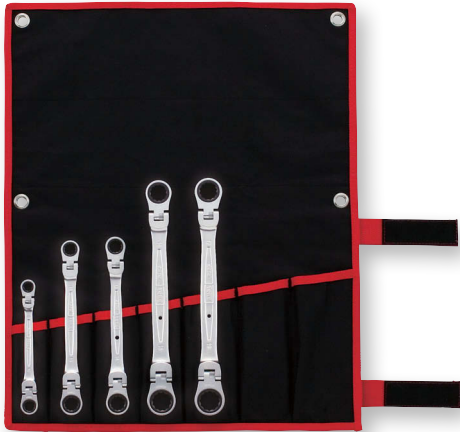


2 sizes in 1 wrench, both sides with ratchet mechanism. Both sides can be adjusted with 15°. Possible for working in confined spaces. Hanging hole for the fall prevention cable (RMFW-1214 and larger size).

- Good Design award winning item
- Double flex head ratchet type



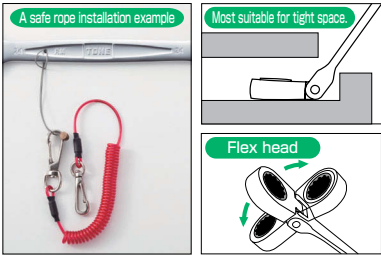
RMFW500

Good Design award



RMFW-1214

RMFW-1719



RATCHET RING WRENCH, FLEX HEAD SET

Models **RMFW500**

Contents **5 Items**

Models	RMFW-	0810	1113	1214	1618	1719
Across Flat(mm)		8×10	11×13	12×14	16×18	17×19

- Tool bag (BNRM7L)
- Weight : 1.08kg
- Qty./Carton : 1

※ Tool bag (2 spare pockets).
※ A tool bag is available for separate purchase. Please see P115.
※ In case of out-of-stock, non-locking flex head will be automatically changed to locking flex head (15° angle each turn).

Easy to store and carry!!



Example

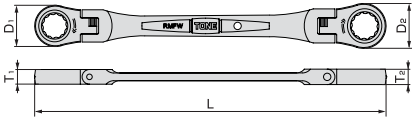


RATCHET RING WRENCH, FLEX HEAD

Models	Across Flat (mm)	Dimensions (mm)						Qty./Carton		Weight (g)
		D ₁	D ₂	T ₁	T ₂	L		(Generally)	(Store Center)	
RMFW-0810	8 × 10	16.4	20.0	6.5	7.3	151		10	10	60
RMFW-1012	10 × 12	20.0	23.0	7.3	8.2	176		10	10	93
RMFW-1113	11 × 13	21.8	25.2	7.7	8.6	197		10	10	120
RMFW-1214	12 × 14	23.0	26.8	8.2	9.0	199		10	10	129
RMFW-1314	13 × 14	25.2	26.8	8.6	9.0	204		10	10	138
RMFW-1317	13 × 17	25.2	31.8	8.6	10.3	229		10	10	187
RMFW-1417	14 × 17	26.8	31.6	9.0	10.3	230		10	10	187
RMFW-1618	16 × 18	29.8	32.8	9.9	10.7	263		10	10	258
RMFW-1719	17 × 19	31.8	33.9	10.3	11.2	267		10	10	271

- With safety rope attaching hole (RMFW-1214 and larger)

※ In case of out-of-stock, non-locking flex head will be automatically changed to locking flex head (15° angle each turn).



- Use wrench suitably fitted with bolt / nut.
- Do not use with extension pipe etc.
- Avoid giving shock by hitting with hammer etc.