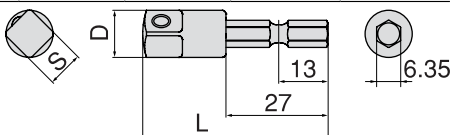
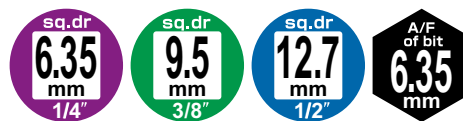


SOCKET ADAPTOR for ELECTRIC DRILL

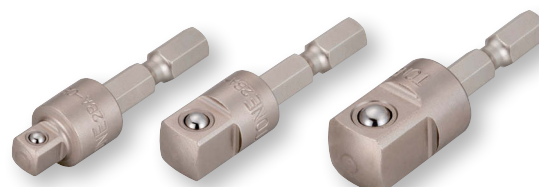
Models	Width across flat (mm)	Dimensions (mm)		Qty./Carton	Weight (g)
	S	D	L		
2BA-08	6.35	12.5	47	6	20
2BA-12	9.5	12.5	49	6	23
2BA-16	12.7	16.0	51	6	36



An adapter for socket to be usable with electric drills. Excellent durability and strong against shaft breakage with press-in type for attaching and detaching various bolts and nuts. Excellent durability against shaft breakage!



- A quick socket exchange is possible.
- Ball type



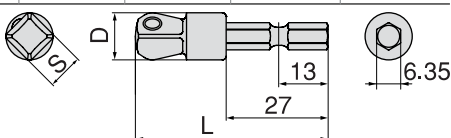
2BA-08

2BA-12

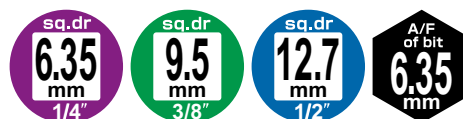
2BA-16

SOCKET ADAPTOR for ELECTRIC DRILL, FLEX HEAD

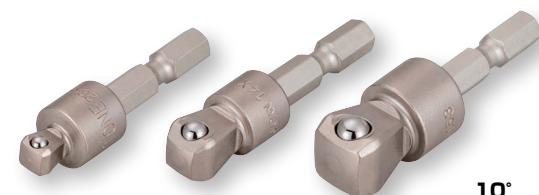
Models	Width across flat (mm)	Dimensions (mm)		Qty./Carton	Weight (g)
	S	D	L		
2BAF-08	6.35	12.5	47	6	20
2BAF-12	9.5	12.5	51	6	23
2BAF-16	12.7	16.0	54	6	37



※ Be aware to not put too much pressure, because the structure is weaker than regular product.



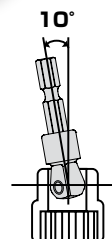
- Support tilt 10 degree
- Ideal for narrow or limited space.
- Ball type



2BAF-08

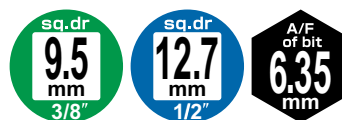
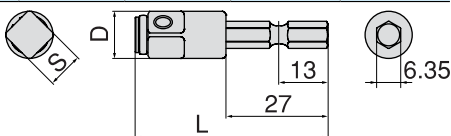
2BAF-12

2BAF-16

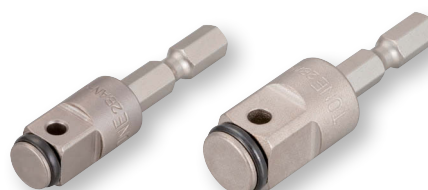


IMPACT SOCKET ADAPTOR for ELECTRIC DRILL

Models	Width across flat (mm)	Dimensions (mm)		Qty./Carton	Weight (g)
	S	D	L		
2BAN-12	9.5	12.5	51	6	25
2BAN-16	12.7	16.0	54	6	40



- Ring and pin hole type



2BAN-12

2BAN-16