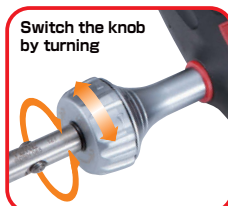
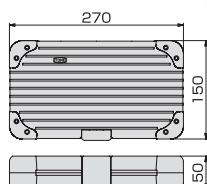


A full set of 3 sizes of interchangeable. Included bit holders and 32 frequently used bits in a T-shaped grip with a ratchet function.

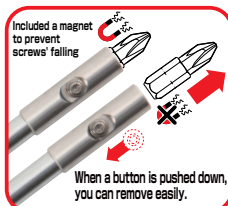
A/F of bit  
**6.35 mm**



RDTS32



- Switchable to left-right rotation, fixed



- One-touch bit release system



- 3 sizes interchangeable holder included

## T-TYPE RATCHET SCREWDRIVER SET

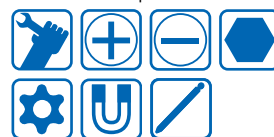
Models **RDTS32**

Contents **35 Items** (Bit : 31 / Handle : 4)

Descriptions	Models/Specifications	Page
T-TYPE RATCHET SCREWDRIVER	<b>RDT</b>	<b>P.358</b>
BIT HOLDER	<b>RDBH- 065(65mm), 140(140mm), 210(210mm)</b>	<b>P.360</b>
SCREWDRIVER & ADAPTER SET	<b>BTPM10S</b> Driver bit ⊕ Driver bit ⊖ Bit adapter Bit holder	<b>P.361</b>
HEX BIT SET	<b>BTH10S</b> Hexagon bit Bit holder	<b>P.361</b>
T-TYPE TORX BIT SET	<b>BTTH12S</b> T-type Torx bit (Tamer-proof) Bit holder	<b>P.361</b>
PLASTIC HOLDER for BIT	<b>BTB 12(For 12)</b>	<b>P.364</b>
PLASTIC CASE		—

※ The content for bit holder included 3 items of bit set and 1 item for replenishment.

- With plastic case
- With magnet (Bit holder)
- Package size : w270x d150x h55mm
- Weight : 850g
- Qty./Carton : 6



※ TORX PLUS and Torx plus are registered trademarks of Acument Intellectual Properties LLC.

- Ratchet organization in 8 deg of feed corner
- Two color trays for easier recognize
- With bit holder (for replenishment) that convenient when adding bits
- Convenient for falling-prevention of screws with magnet
- also the socket supported as a bit adapter (6.35 mm [1/4"]).

Models **RDT10S**

Contents **12 Items** (Bit : 10 / Handle : 2)

Descriptions	Models/Specifications	Page
T-TYPE RATCHET SCREWDRIVER	<b>RDT</b>	<b>P.358</b>
BIT HOLDER	<b>RDBH- 065(65mm)</b>	<b>P.360</b>
SCREWDRIVER & ADAPTER SET	<b>BTPM10S</b> Driver bit ⊕ Driver bit ⊖ Bit adapter Bit holder	<b>P.361</b>

- Packaged in a plastic case
- Weight : 231g
- Qty./Carton : 6



## T-TYPE RATCHET SCREWDRIVER

Models	Across flat (mm)	Ratchet feed	Dimensions (mm)							Weight (g)
	S		D	W <sub>1</sub>	W <sub>2</sub>	L <sub>1</sub>	L <sub>2</sub>	L <sub>3</sub>	L	
<b>RDT</b>	6.35	8°	34	100	25	14	37	31	83	171

※ We do not sell parts by part.

### CAUTION

- Use ratchet handles slowly and softly.
- Switch over the direction completely.

