

DUAL OPENING IMPACT SOCKET SET (for TRUCK WHEEL)

Models **A605T**

Contents **5 Items**

Descriptions	Models
DUAL OPENING IMPACT SOCKET (for TRUCK WHEEL)	6A- 3217 (32 × 17), 3517 (35 × 17) 3820 (38 × 20), 4119 (41 × 19) 4121 (41 × 21)

- 6 Points strong drive
- For tightening/loosening outer nut and inner nut
- Package size : w310x d130x h110mm
- Weight : 4.9kg
- Qty./Carton : 1



Wheel nut socket (outer and inner) for large buses and trucks. Easy to organize and get access to products with design case.



For bus/truck

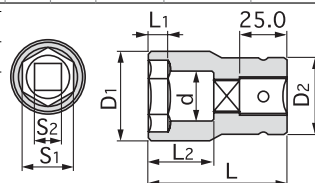


A605T

DUAL OPENING IMPACT SOCKET (for TRUCK WHEEL)

Models	Across Flat (mm)	Dimensions (mm)							Qty./Carton		Weight (g)
		S ₁ × S ₂	D ₁	D ₂	L ₁	L ₂	L	d	(Generally)	(Store Center)	
6A-3217	32 × 17	47	44	11.5	37.5	75	27	5	5	5	635
6A-3517	35 × 17	50	44	12.5	38.5	75	28	5	5	5	675
6A-3820	38 × 20	55	44	14.0	38.0	75	33	5	5	5	730
6A-4119	41 × 19	58	44	12.5	41.5	80	35	5	5	5	830
6A-4121	41 × 21	58	44	12.5	42.5	80	35	5	5	5	825

- 6 Points strong drive
- For tightening/loosening outer nut and inner nut



Wheel nut socket (outer and inner) for large buses and trucks. Tightening/loosening outer/inner nuts with the same socket. Durability improved.



6A-3820

Pin/O-ring compatible chart

Models 6A-	3217 ~ 4121
Pin	PIN5039S
O-ring	RINGW28S

※ Within a plastic bag (10 pcs./pkg.)

CAUTION

- "Budd Wheel Socket (for Outer Nut of Truck Wheel)" and "Budd Wheel Socket (for Inner Nut of Truck Wheel)" will fit a nut of your truck wheel when Dual Opening Impact Socket (for TRUCK WHEEL) does not fit the nut well.

Outer nut



Inner nut



For impact wrenches

WARNING

- Use right size o-ring and pin securely fixed.
- O-ring and pin are consumptive parts. Replace those which are deteriorated or worn.

STAINLESS TOOL
TITANIUM TOOL

TOOL SET

TOOL CASE

SOCKET
WRENCH

HEXAGON
WRENCH

T-TYPE
WRENCH

SPANNER
OFFSET WRENCH

SCREWDRIVER

BIT

ADJUSTABLE
WRENCH
PLIERS

SPECIALIZED
CAR EQUIPMENT

CYCLE TOOL

LED LIGHT

OTHER HAND
TOOLS

TORQUE
WRENCH

AIR TOOL